

SDCBP Antibody



PACO49994

Product Information

Size:

50ug

Reactivity:

Human, Mouse, Rat

Source:

Rabbit

Isotype:

IgG

Applications:

ELISA, WB, IHC, IF

Recommended dilutions:

ELISA:1:2000-1:10000, WB:1:200-1:5000,
IHC:1:20-1:200, IF:1:50-1:200

Protein Background:**Gene ID:**

SDCBP

Uniprot

O00560

Synonyms:

Syntenin-1 (Melanoma differentiation-associated protein 9) (MDA-9) (Pro-TGF-alpha cytoplasmic domain-interacting protein 18) (TACIP18) (Scaffold protein Pbp1) (Syndecan-binding protein 1), SDCBP, MDA9 SYCL

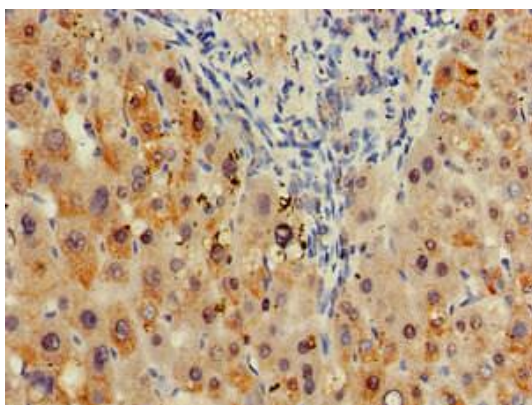
Immunogen:

Recombinant Human Syntenin-1 protein (21-228AA).

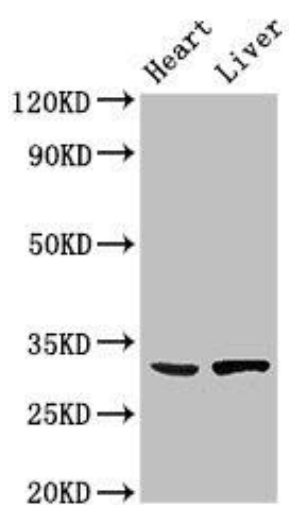
Storage:

Preservative: 0.03% Proclin 300. Constituents: 50% Glycerol, 0.01M PBS, pH 7.4

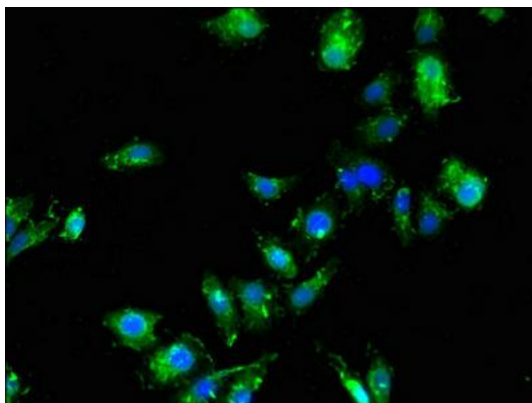
Product Images



Immunohistochemistry of paraffin-embedded human liver tissue using PACO49994 at dilution of 1:100.



Western Blot. Positive WB detected in: Mouse heart tissue, Rat liver tissue. All lanes: SDCBP antibody at 3 μ g/ml. Secondary. Goat polyclonal to rabbit IgG at 1/50000 dilution. Predicted band size: 33, 32 kDa. Observed band size: 33 kDa.



Immunofluorescent analysis of HepG2 cells using PACO49994 at dilution of 1:100 and Alexa Fluor 488-conjugated AffiniPure Goat Anti-Rabbit IgG(H+L).