

PACO49986

Product Information

Size:

50ug

Reactivity:

Human, Mouse

Source:

Rabbit

Isotype:

IgG

Applications:

ELISA, WB, IHC, IF

Recommended dilutions:

ELISA:1:2000-1:10000, WB:1:500-1:5000,
IHC:1:20-1:200, IF:1:50-1:200

Protein Background:

cell-cell adherens junction, cytoplasm, cytosol, cytosolic small ribosomal subunit, extracellular exosome, focal adhesion, membrane, nucleoplasm, nucleus, cadherin binding involved in cell-cell adhesion.

Gene ID:

RPS2

Uniprot

P15880

Synonyms:

40S ribosomal protein S2 (40S ribosomal protein S4) (Protein LLRep3) (Small ribosomal subunit protein uS5), RPS2, RPS4

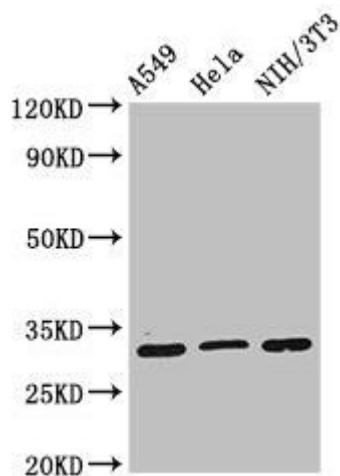
Immunogen:

Recombinant Human 40S ribosomal protein S2 protein (2-61AA).

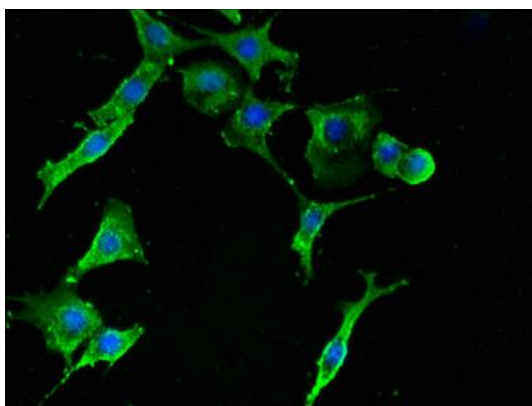
Storage:

Preservative: 0.03% Proclin 300. Constituents: 50% Glycerol, 0.01M PBS, pH 7.4

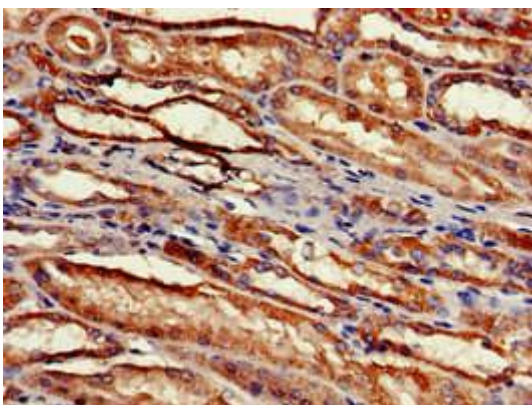
Product Images



Western Blot. Positive WB detected in: A549 whole cell lysate, HeLa whole cell lysate, NIH/3T3 whole cell lysate. All lanes: RPS2 antibody at 2 μ g/ml. Secondary. Goat polyclonal to rabbit IgG at 1/50000 dilution. Predicted band size: 32 kDa. Observed band size: 32 kDa.



Immunofluorescent analysis of MCF-7 cells using PACO49986 at dilution of 1:100 and Alexa Fluor 488-conjugated AffiniPure Goat Anti-Rabbit IgG(H+L).



Immunohistochemistry of paraffin-embedded human kidney tissue using PACO49986 at dilution of 1:100.