

Product Information

Size:

50ug

Reactivity:

Human

Source:

Rabbit

Isotype:

IgG

Applications:

ELISA, WB, IHC, IF

Recommended dilutions:

ELISA:1:2000-1:10000, WB:1:500-1:5000,
IHC:1:20-1:200, IF:1:50-1:200

Protein Background:

cytoplasm, cytosol, cytosolic small ribosomal subunit, focal adhesion, membrane, nucleoplasm, nucleus, DNA binding, poly(A) RNA binding, structural constituent of ribosome.

Gene ID:

RPS15

Uniprot

P62841

Synonyms:

40S ribosomal protein S15 (RIG protein) (Small ribosomal subunit protein uS19), RPS15, RIG

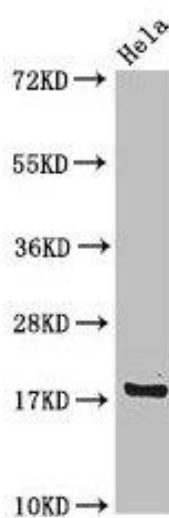
Immunogen:

Recombinant Human 40S ribosomal protein S15 protein (63-137AA).

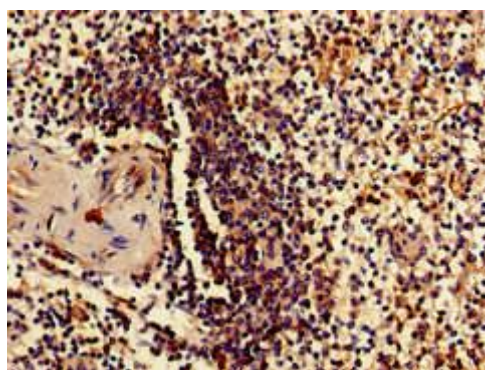
Storage:

Preservative: 0.03% Proclin 300. Constituents: 50% Glycerol, 0.01M PBS, pH 7.4

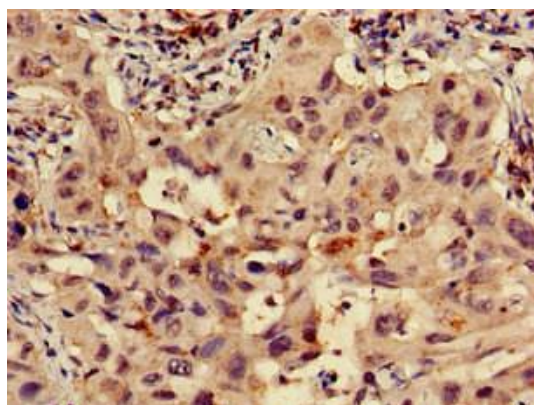
Product Images



Western Blot. Positive WB detected in: HeLa whole cell lysate. All lanes: RPS15 antibody at 4 μ g/ml. Secondary: Goat polyclonal to rabbit IgG at 1/50000 dilution. Predicted band size: 18 kDa. Observed band size: 18 kDa.



Immunohistochemistry of paraffin-embedded human spleen tissue using PACO49982 at dilution of 1:100.



Immunohistochemistry of paraffin-embedded human lung cancer using PACO49982 at dilution of 1:100.