

RPL4 Antibody



PACO49978

Product Information

Size:

50ug

Reactivity:

Human

Source:

Rabbit

Isotype:

IgG

Applications:

ELISA, WB, IHC, IF

Recommended dilutions:

ELISA:1:2000-1:10000, WB:1:500-1:5000,
IHC:1:20-1:200, IF:1:50-1:200

Protein Background:

cytoplasm, cytosol, cytosolic large ribosomal subunit, extracellular exosome, focal adhesion, intracellular ribonucleoprotein complex, membrane, nucleolus, nucleus, poly(A) RNA binding.

Gene ID:

RPL4

Uniprot

P36578

Synonyms:

60S ribosomal protein L4 (60S ribosomal protein L1) (Large ribosomal subunit protein uL4), RPL4, RPL1

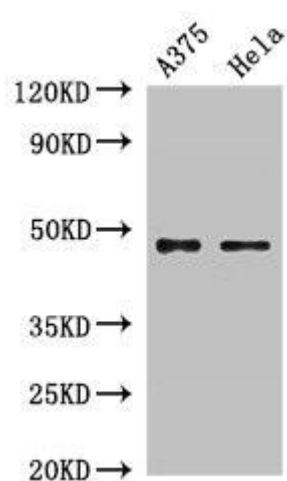
Immunogen:

Recombinant Human 60S ribosomal protein L4 protein (12-91AA).

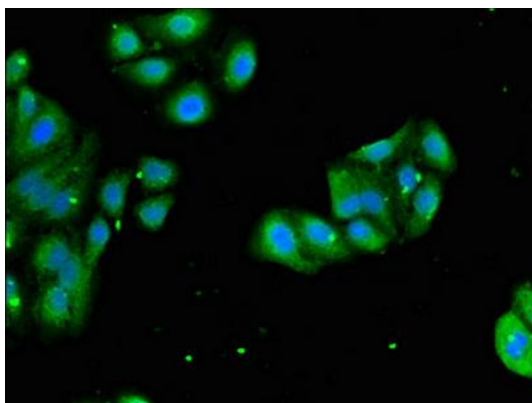
Storage:

Preservative: 0.03% Proclin 300. Constituents: 50% Glycerol, 0.01M PBS, pH 7.4

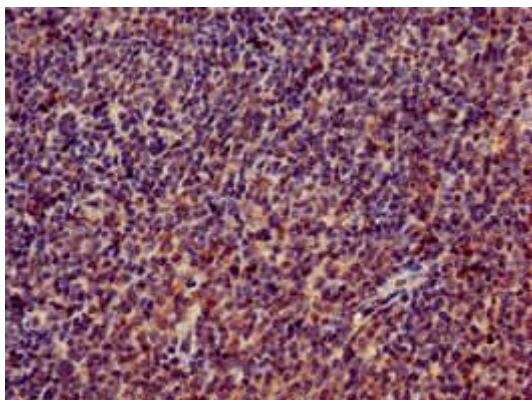
Product Images



Western Blot. Positive WB detected in: A375 whole cell lysate, HeLa whole cell lysate. All lanes: RPL4 antibody at 2 μ g/ml. Secondary. Goat polyclonal to rabbit IgG at 1/50000 dilution. Predicted band size: 48 kDa. Observed band size: 48 kDa.



Immunofluorescent analysis of HepG2 cells using PACO49978 at dilution of 1:100 and Alexa Fluor 488-conjugated AffiniPure Goat Anti-Rabbit IgG(H+L).



Immunohistochemistry of paraffin-embedded human lymph node tissue using PACO49978 at dilution of 1:100.