

RPL26 Antibody



PACO49974

Product Information

Size:

50ug

Reactivity:

Human

Source:

Rabbit

Isotype:

IgG

Applications:

ELISA, IHC, IF

Recommended dilutions:

ELISA:1:2000-1:10000, IHC:1:500-1:1000,
IF:1:50-1:200

Protein Background:

cytosol, cytosolic large ribosomal subunit, extracellular exosome, membrane, poly(A) RNA binding, RNA binding, structural constituent of ribosome, cytoplasmic translation, nuclear-transcribed mRNA catabolic process, nonsense-mediated decay, ribosomal large subunit biogenesis.

Gene ID:

RPL26

Uniprot

P61254

Synonyms:

60S ribosomal protein L26 (Large ribosomal subunit protein uL24), RPL26

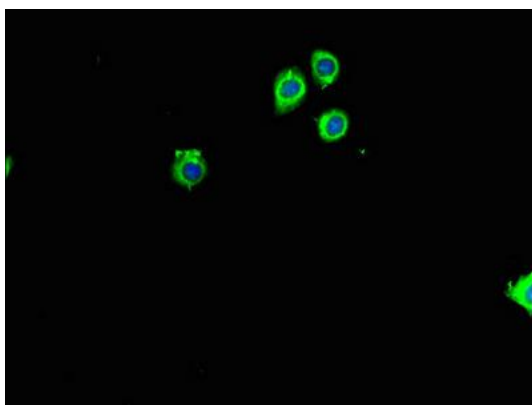
Immunogen:

Recombinant Human 60S ribosomal protein L26 protein (48-143AA).

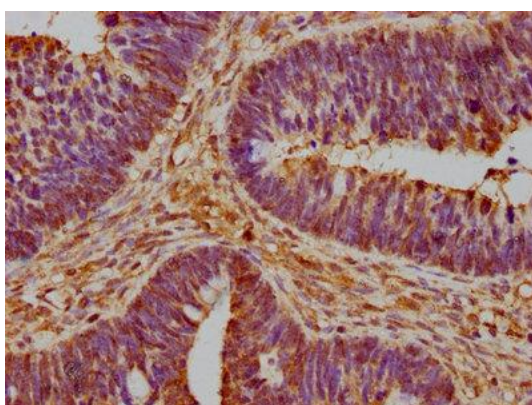
Storage:

Preservative: 0.03% Proclin 300. Constituents: 50% Glycerol, 0.01M PBS, pH 7.4

Product Images



Immunofluorescent analysis of HepG2 cells using PACO49974 at dilution of 1:100 and Alexa Fluor 488-conjugated AffiniPure Goat Anti-Rabbit IgG(H+L).



IHC image of PACO49974 diluted at 1:600 and staining in paraffin-embedded human ovarian cancer performed on a Leica Bond™ system. After dewaxing and hydration, antigen retrieval was mediated by high pressure in a citrate buffer (pH 6.0). Section was blocked with 10% normal goat serum 30min at RT. Then primary antibody (1% BSA) was incubated at 4°C overnight. The primary is detected by a biotinylated secondary antibody and visualized using an HRP conjugated SP system.