

RPL19 Antibody



PACO49970

Product Information

Size:

50ug

Reactivity:

Human, Mouse

Source:

Rabbit

Isotype:

IgG

Applications:

ELISA, WB, IHC, IF

Recommended dilutions:

ELISA:1:2000-1:10000, WB:1:500-1:5000,
IHC:1:20-1:200, IF:1:50-1:200

Protein Background:

cytoplasm, cytosol, cytosolic large ribosomal subunit, focal adhesion, membrane, nucleolus, poly(A) RNA binding, RNA binding, structural constituent of ribosome, nuclear-transcribed mRNA catabolic process, nonsense-mediated decay.

Gene ID:

RPL19

Uniprot

P84098

Synonyms:

60S ribosomal protein L19 (Large ribosomal subunit protein eL19), RPL19

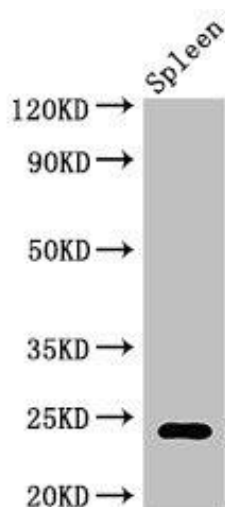
Immunogen:

Recombinant Human 60S ribosomal protein L19 protein (79-196AA).

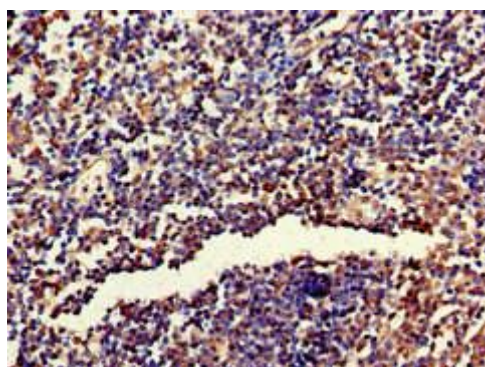
Storage:

Preservative: 0.03% Proclin 300. Constituents: 50% Glycerol, 0.01M PBS, pH 7.4

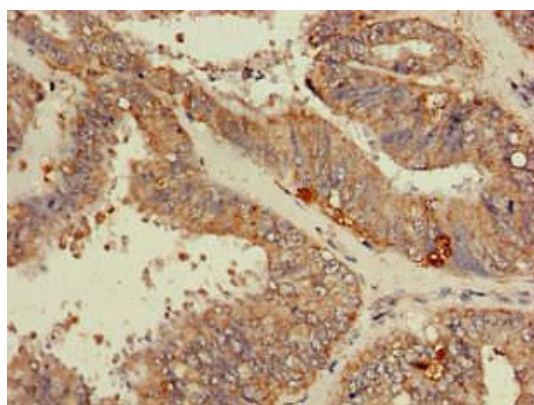
Product Images



Western Blot. Positive WB detected in: Mouse spleen tissue. All lanes: RPL19 antibody at 2 μ g/ml. Secondary: Goat polyclonal to rabbit IgG at 1/50000 dilution. Predicted band size: 24 kDa. Observed band size: 24 kDa.



Immunohistochemistry of paraffin-embedded human tonsil tissue using PACO49970 at dilution of 1:100.



Immunohistochemistry of paraffin-embedded human endometrial cancer using PACO49970 at dilution of 1:100.