

PACO49918

Product Information

Size:

50ug

Reactivity:

Human

Source:

Rabbit

Isotype:

IgG

Applications:

ELISA, IHC, IF

Recommended dilutions:

ELISA:1:2000-1:10000, IHC:1:20-1:200,
IF:1:50-1:200

Protein Background:

The proteasome is a multicatalytic proteinase complex which is characterized by its ability to cleave peptides with Arg, Phe, Tyr, Leu, and Glu adjacent to the leaving group at neutral or slightly basic pH. The proteasome has an ATP-dependent proteolytic activity. PSMA2 may have a potential regulatory effect on another component(s) of the proteasome complex through tyrosine phosphorylation.

Gene ID:

PSMA2

Uniprot

P25787

Synonyms:

Proteasome subunit alpha type-2 (EC 3.4.25.1) (Macropain subunit C3) (Multicatalytic endopeptidase complex subunit C3) (Proteasome component C3), PSMA2, HC3 PSC3

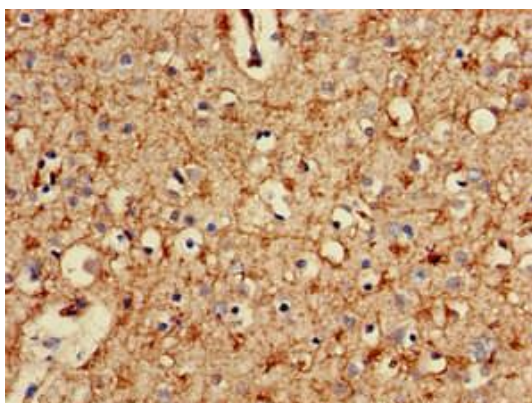
Immunogen:

Recombinant Human Proteasome subunit α type-2 protein (120-227AA).

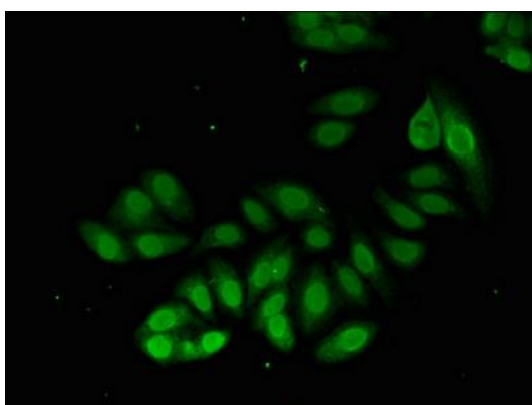
Storage:

Preservative: 0.03% Proclin 300. Constituents: 50% Glycerol, 0.01M PBS, pH 7.4

Product Images



Immunohistochemistry of paraffin-embedded human brain tissue using PACO49918 at dilution of 1:100.



Immunofluorescent analysis of HepG2 cells using PACO49918 at dilution of 1:100 and Alexa Fluor 488-conjugated AffiniPure Goat Anti-Rabbit IgG(H+L).