

PACO49698

Product Information

Size:

50ug

Reactivity:

Human, Mouse

Source:

Rabbit

Isotype:

IgG

Applications:

ELISA, WB, IF

Recommended dilutions:

ELISA:1:2000-1:10000, WB:1:500-1:5000,
IF:1:50-1:200

Protein Background:

Probable DNA-binding transcriptional activator. Key determinant of the keratinocyte proliferation-differentiation switch involved in appropriate epidermal development. Plays a role in regulating mammary epithelial cell proliferation. May regulate WDR65 transcription.

Gene ID:

IRF6

Uniprot

O14896

Synonyms:

Interferon regulatory factor 6 (IRF-6), IRF6

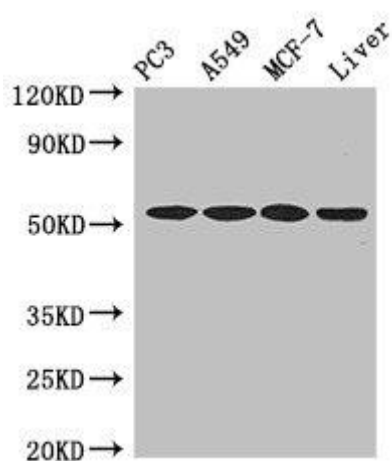
Immunogen:

Recombinant Human Interferon regulatory factor 6 protein (43-285AA).

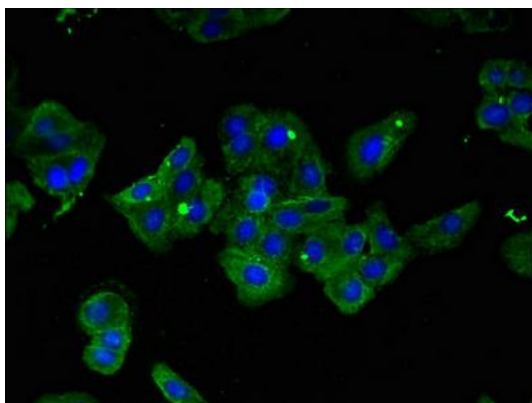
Storage:

Preservative: 0.03% Proclin 300. Constituents: 50% Glycerol, 0.01M PBS, pH 7.4

Product Images



Western Blot. Positive WB detected in: PC-3 whole cell lysate, A549 whole cell lysate, MCF-7 whole cell lysate, , Mouse liver tissue. All lanes: IRF6 antibody at 4 μ g/ml. Secondary. Goat polyclonal to rabbit IgG at 1/50000 dilution. Predicted band size: 54, 42 kDa. Observed band size: 54 kDa.



Immunofluorescent analysis of HepG2 cells using PACO49698 at dilution of 1:100 and Alexa Fluor 488-conjugated AffiniPure Goat Anti-Rabbit IgG(H+L).