

GPR85 Antibody



PACO49650

Product Information

Size:

50ug

Reactivity:

Human

Source:

Rabbit

Isotype:

IgG

Applications:

ELISA, IHC

Recommended dilutions:

ELISA:1:2000-1:10000, IHC:1:20-1:200

Protein Background:

Orphan receptor.

Gene ID:

GPR85

Uniprot

P60893

Synonyms:

Probable G-protein coupled receptor 85 (Super conserved receptor expressed in brain 2), GPR85, SREB2

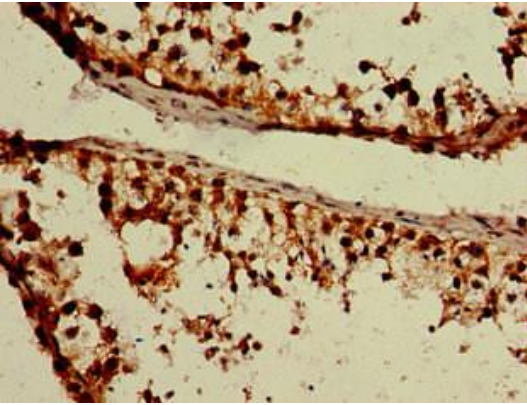
Immunogen:

Recombinant Human Probable G-protein coupled receptor 85 protein (229-267AA).

Storage:

Preservative: 0.03% Proclin 300. Constituents: 50% Glycerol, 0.01M PBS, pH 7.4

Product Images



Immunohistochemistry of paraffin-embedded human testis tissue using PACO49650 at dilution of 1:100.