

# GJA8 Antibody



PACO49638

---

## Product Information

**Size:**

50ug

**Reactivity:**

Human, Mouse, Rat

**Source:**

Rabbit

**Isotype:**

IgG

**Applications:**

ELISA, WB, IHC, IF

**Recommended dilutions:**

ELISA:1:2000-1:10000, WB:1:500-1:5000,  
IHC:1:20-1:200, IF:1:50-1:200

**Protein Background:**

One gap junction consists of a cluster of closely packed pairs of transmembrane channels, the connexons, through which materials of low MW diffuse from one cell to a neighboring cell.

**Gene ID:**

GJA8

**Uniprot**

P48165

**Synonyms:**

Gap junction alpha-8 protein (Connexin-50) (Cx50) (Lens fiber protein MP70), GJA8

**Immunogen:**

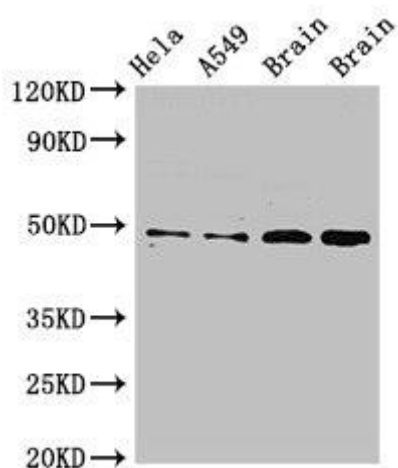
Recombinant Human Gap junction alpha-8 protein (286-432AA).

**Storage:**

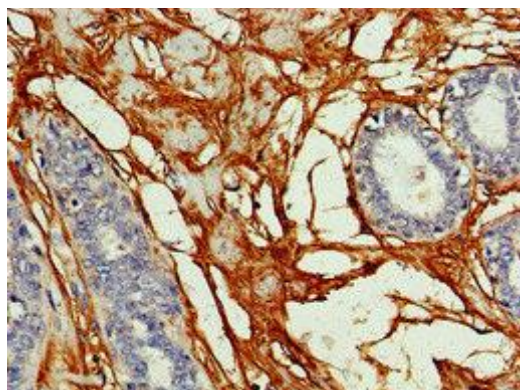
Preservative: 0.03% Proclin 300. Constituents: 50% Glycerol, 0.01M PBS, pH 7.4

## Product Images

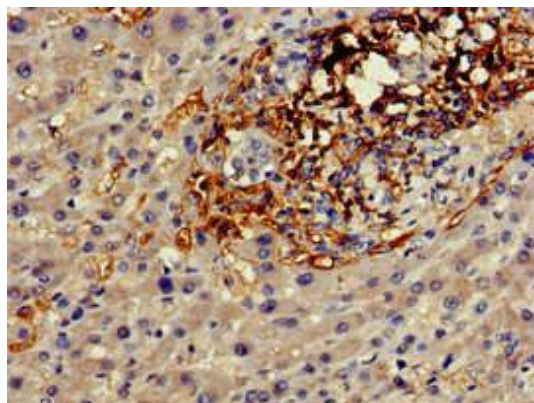
---



Western Blot. Positive WB detected in: HeLa whole cell lysate, A549 whole cell lysate, Rat brain tissue, Mouse brain tissue. All lanes: GJA8 antibody at 2.5 $\mu$ g/ml. Secondary. Goat polyclonal to rabbit IgG at 1/50000 dilution. Predicted band size: 49 kDa. Observed band size: 49 kDa.



Immunohistochemistry of paraffin-embedded human breast cancer using PACO49638 at dilution of 1:100.



Immunohistochemistry of paraffin-embedded human liver cancer using PACO49638 at dilution of 1:100.