

GCM2 Antibody



PACO49626

Product Information

Size:

50ug

Reactivity:

Human, Rat

Source:

Rabbit

Isotype:

IgG

Applications:

ELISA, WB, IHC

Recommended dilutions:

ELISA:1:2000-1:10000, WB:1:500-1:5000,
IHC:1:20-1:200

Protein Background:

Probable transcriptional regulator.

Gene ID:

GCM2

Uniprot

O75603

Synonyms:

Chorion-specific transcription factor GCMb (hGCMb) (GCM motif protein 2) (Glial cells missing homolog 2), GCM2, GCMB

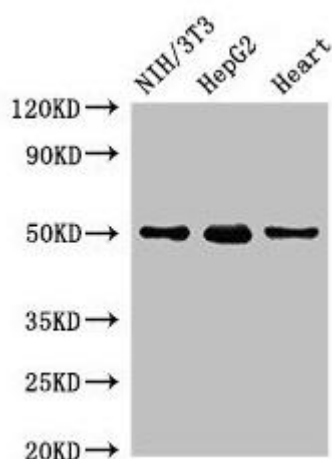
Immunogen:

Recombinant Human Chorion-specific transcription factor GCMb protein (156-451AA).

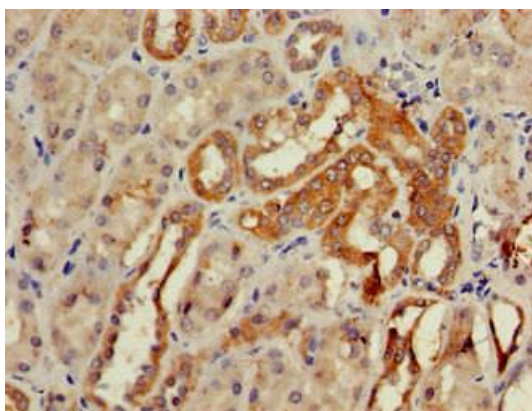
Storage:

Preservative: 0.03% Proclin 300. Constituents: 50% Glycerol, 0.01M PBS, pH 7.4

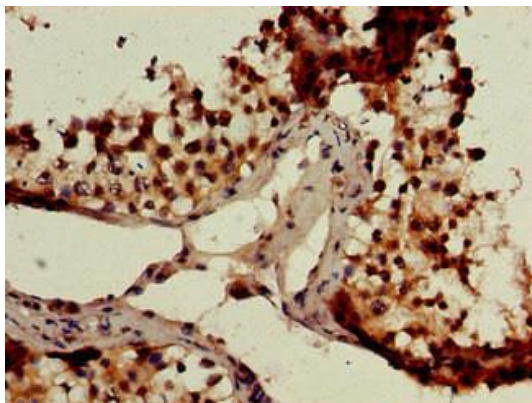
Product Images



Western Blot. Positive WB detected in: NIH/3T3 whole cell lysate, HepG2 whole cell lysate, Rat heart tissue. All lanes: GCM2 antibody at 2 μ g/ml. Secondary. Goat polyclonal to rabbit IgG at 1/50000 dilution. Predicted band size: 57 kDa. Observed band size: 50 kDa.



Immunohistochemistry of paraffin-embedded human kidney tissue using PACO49626 at dilution of 1:100.



Immunohistochemistry of paraffin-embedded human testis tissue using PACO49626 at dilution of 1:100.