

Product Information

Size:

50ug

Reactivity:

Human

Source:

Rabbit

Isotype:

IgG

Applications:

ELISA, IHC

Recommended dilutions:

ELISA:1:2000-1:10000, IHC:1:20-1:200

Protein Background:

Senses unfolded proteins in the lumen of the endoplasmic reticulum via its N-terminal domain which leads to enzyme auto-activation. The active endoribonuclease domain splices XBP1 mRNA to generate a new C-terminus, converting it into a potent unfolded-protein response transcriptional activator and triggering growth arrest and apoptosis.

Gene ID:

ERN1

Uniprot

O75460

Synonyms:

Serine/threonine-protein kinase/endoribonuclease IRE1 (Endoplasmic reticulum-to-nucleus signaling 1) (Inositol-requiring protein 1) (hIRE1p) (Ire1-alpha) (IRE1a) [Includes: Serine/threonine-protein kinase (EC 2.7.11.1); Endoribonuclease (EC 3.1.26)], ERN1, IRE1

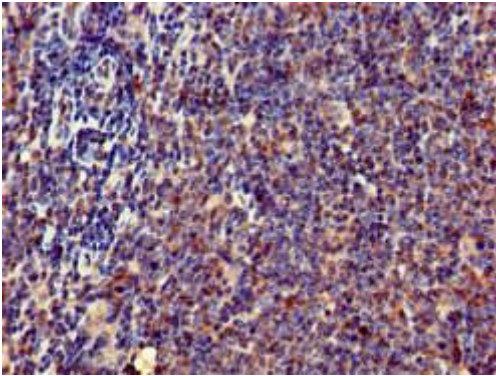
Immunogen:

Recombinant Human Serine/threonine-protein kinase/endoribonuclease IRE1 protein (493-561AA).

Storage:

Preservative: 0.03% Proclin 300. Constituents: 50% Glycerol, 0.01M PBS, pH 7.4

Product Images



Immunohistochemistry of paraffin-embedded human lymph node tissue using PACO49578 at dilution of 1:100.