

PACO49498

Product Information

Size:

50ug

Reactivity:

Human

Source:

Rabbit

Isotype:

IgG

Applications:

ELISA, WB, IHC

Recommended dilutions:

ELISA:1:2000-1:10000, WB:1:500-1:5000,
IHC:1:20-1:200

Protein Background:

Important for the overall degradation of proteins in lysosomes.

Gene ID:

CTSH

Uniprot

P09668

Synonyms:

Pro-cathepsin H [Cleaved into: Cathepsin H mini chain; Cathepsin H (EC 3.4.22.16);
Cathepsin H heavy chain; Cathepsin H light chain], CTSH, CPSB

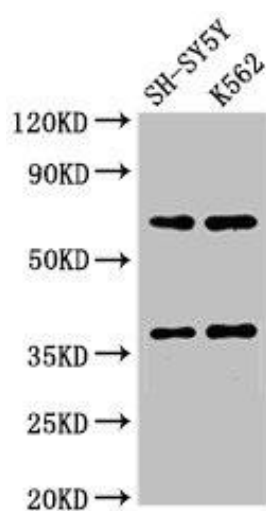
Immunogen:

Recombinant Human Pro-cathepsin H protein (116-219AA).

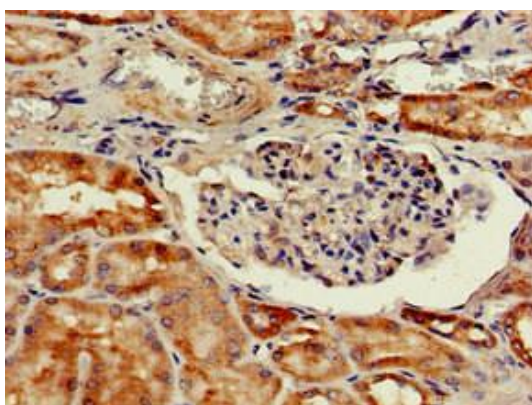
Storage:

Preservative: 0.03% Proclin 300. Constituents: 50% Glycerol, 0.01M PBS, pH 7.4

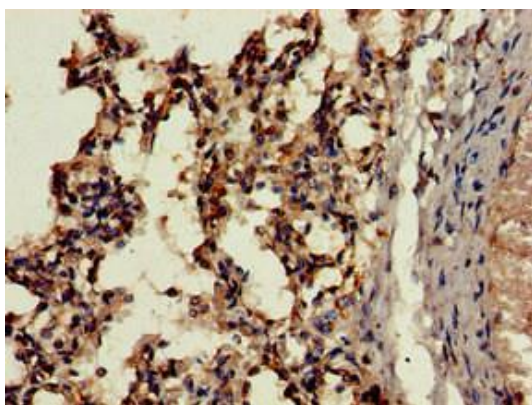
Product Images



Western Blot. Positive WB detected in: SH-SY5Y whole cell lysate, K562 whole cell lysate. All lanes: CTSB antibody at 2.7 μ g/ml. Secondary. Goat polyclonal to rabbit IgG at 1/50000 dilution. Predicted band size: 38 kDa. Observed band size: 38 kDa.



Immunohistochemistry of paraffin-embedded human kidney tissue using PACO49498 at dilution of 1:100.



Immunohistochemistry of paraffin-embedded human lung tissue using PACO49498 at dilution of 1:100.