

# CEBPA Antibody



PACO49474

---

## Product Information

**Size:**

50ug

**Reactivity:**

Human

**Source:**

Rabbit

**Isotype:**

IgG

**Applications:**

ELISA, WB, IHC

**Recommended dilutions:**

ELISA:1:2000-1:10000, WB:1:500-1:5000,  
IHC:1:20-1:200

**Protein Background:****Gene ID:**

CEBPA

**Uniprot**

P49715

**Synonyms:**

CCAAT/enhancer-binding protein alpha (C/EBP alpha), CEBPA, CEBP

**Immunogen:**

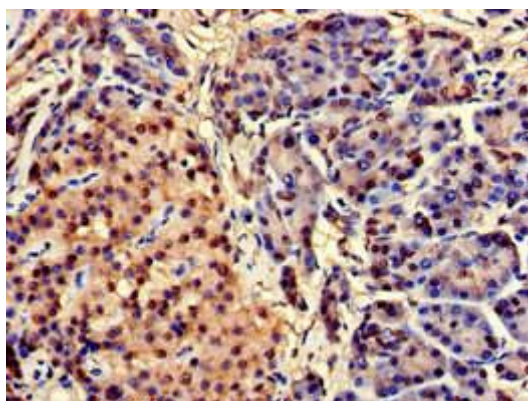
Recombinant Human CCAAT/enhancer-binding protein &alpha; protein (1-124AA).

**Storage:**

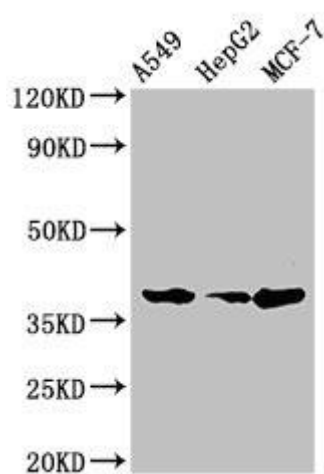
Preservative: 0.03% Proclin 300. Constituents: 50% Glycerol, 0.01M PBS, pH 7.4

## Product Images

---



Immunohistochemistry of paraffin-embedded human pancreatic tissue using PACO49474 at dilution of 1:100.



Western Blot. Positive WB detected in: A549 whole cell lysate, HepG2 whole cell lysate, MCF-7 whole cell lysate. All lanes: CEBPA antibody at 2 $\mu$ g/ml. Secondary. Goat polyclonal to rabbit IgG at 1/50000 dilution. Predicted band size: 38, 36, 26, 42 kDa. Observed band size: 38 kDa.