

ABCC9 Antibody



PACO49370

Product Information

Size:

50ug

Reactivity:

Human

Source:

Rabbit

Isotype:

IgG

Applications:

ELISA, IHC, IF

Recommended dilutions:

ELISA:1:2000-1:10000, IHC:1:20-1:200,
IF:1:50-1:200

Protein Background:

Subunit of ATP-sensitive potassium channels (KATP). Can form cardiac and smooth muscle-type KATP channels with KCNJ11. KCNJ11 forms the channel pore while ABCC9 is required for activation and regulation.

Gene ID:

ABCC9

Uniprot

O60706

Synonyms:

ATP-binding cassette sub-family C member 9 (Sulfonylurea receptor 2), ABCC9, SUR2

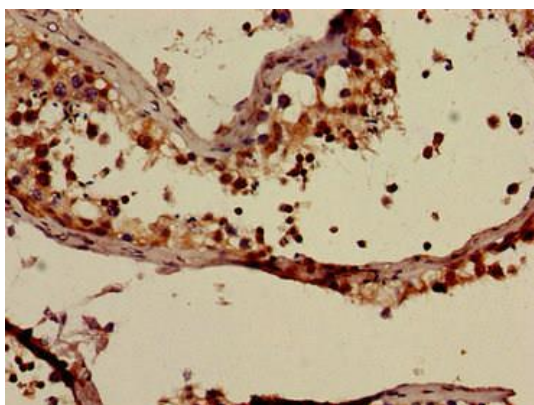
Immunogen:

Recombinant Human ATP-binding cassette sub-family C member 9 protein (560-669AA).

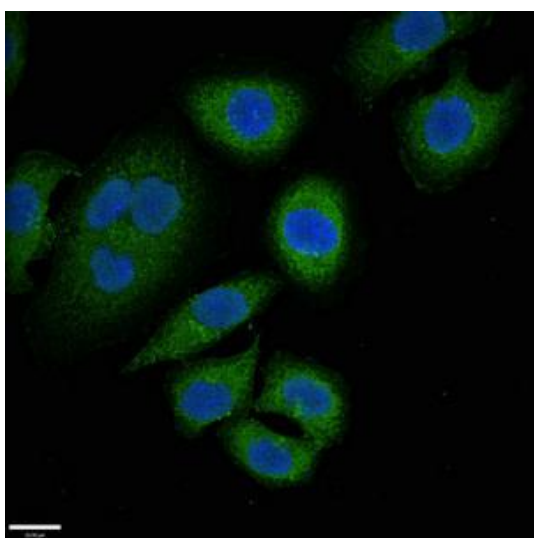
Storage:

Preservative: 0.03% Proclin 300. Constituents: 50% Glycerol, 0.01M PBS, pH 7.4

Product Images



Immunohistochemistry of paraffin-embedded human testis tissue using PACO49370 at dilution of 1:100.



Immunofluorescent analysis of A549 cells using PACO49370 at dilution of 1:100 and Alexa Fluor 488-conjugated AffiniPure Goat Anti-Rabbit IgG(H+L).