

DEF6 Antibody



PACO49318

Product Information

Size:

50ug

Reactivity:

Human, Mouse

Source:

Rabbit

Isotype:

IgG

Applications:

ELISA, WB, IF

Recommended dilutions:

ELISA:1:2000-1:10000, WB:1:500-1:5000,
IF:1:50-1:200

Protein Background:

Phosphatidylinositol 3,4,5-trisphosphate-dependent guanine nucleotide exchange factor (GEF) which plays a role in the activation of Rho GTPases RAC1, RhoA and CDC42. Can regulate cell morphology in cooperation with activated RAC1. Plays a role in Th2 (T helper cells) development and/or activation, perhaps by interfering with ZAP70 signaling.

Gene ID:

DEF6

Uniprot

Q9H4E7

Synonyms:

Differentially expressed in FDCP 6 homolog (DEF-6) (IRF4-binding protein), DEF6, IBP

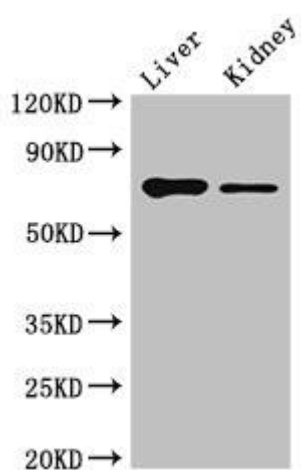
Immunogen:

Recombinant Human Differentially expressed in FDCP 6 homolog protein (20-114AA).

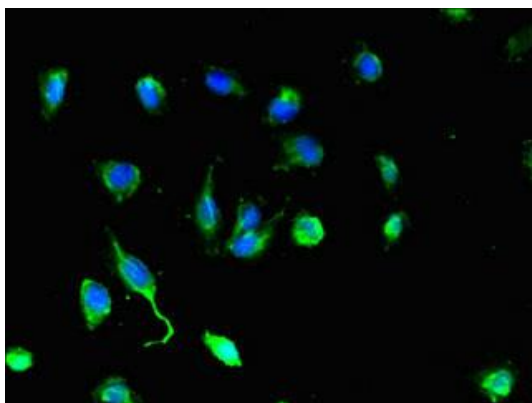
Storage:

Preservative: 0.03% Proclin 300. Constituents: 50% Glycerol, 0.01M PBS, PH 7.4

Product Images



Western Blot. Positive WB detected in: Mouse liver tissue, Mouse kidney tissue. All lanes: DEF6 antibody at 4 μ g/ml. Secondary. Goat polyclonal to rabbit IgG at 1/50000 dilution. Predicted band size: 74 kDa. Observed band size: 74 kDa.



Immunofluorescent analysis of U251 cells using PACO49318 at dilution of 1:100 and Alexa Fluor 488-conjugated AffiniPure Goat Anti-Rabbit IgG(H+L).