

## Product Information

**Size:**

50ug

**Reactivity:**

Human

**Source:**

Rabbit

**Isotype:**

IgG

**Applications:**

ELISA, IHC, IF

**Recommended dilutions:**

ELISA:1:2000-1:10000, IHC:1:20-1:200,  
IF:1:50-1:200

**Protein Background:**

Probable planar cell polarity effector involved in cilium biogenesis. May regulate protein and membrane transport to the cilium. May regulate the morphogenesis of hair follicles which depends on functional primary cilia.

**Gene ID:**

FUZ

**Uniprot**

Q9BT04

**Synonyms:**

Protein fuzzy homolog, FUZ, FY

**Immunogen:**

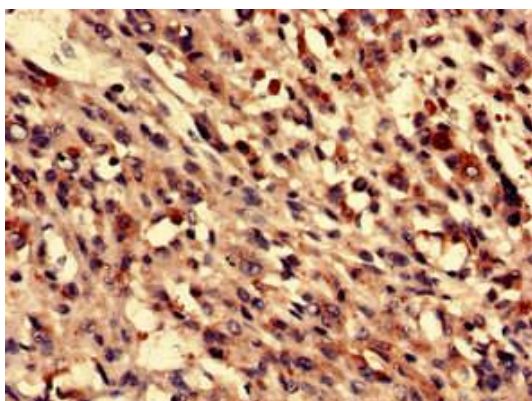
Recombinant Human Protein fuzzy homolog protein (280-404AA).

**Storage:**

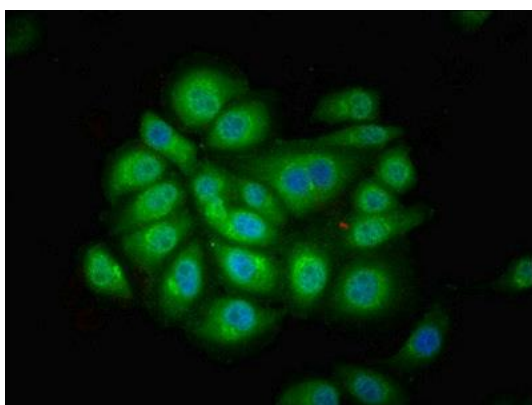
Preservative: 0.03% Proclin 300. Constituents: 50% Glycerol, 0.01M PBS, PH 7.4

## Product Images

---



Immunohistochemistry analysis of human melanoma using PACO49314 at dilution of 1:100.



Immunofluorescent analysis of A549 cells using PACO49314 at dilution of 1:100 and Alexa Fluor 488-conjugated AffiniPure Goat Anti-Rabbit IgG(H+L).