

PACO49234

Product Information

Size:

50ug

Reactivity:

Human, Mouse

Source:

Rabbit

Isotype:

IgG

Applications:

ELISA, WB

Recommended dilutions:

ELISA:1:2000-1:10000, WB:1:500-1:5000

Protein Background:

Positively regulates TLR3- and TLR4-mediated signaling pathways by bridging the interaction between TLR3 or TLR4 and TICAM1. Promotes TLR3/4 ligand-induced activation of transcription factors IRF3 and NF-kappa-B, as well as the production of IFN-beta and inflammatory cytokines.

Gene ID:

WDFY1

Uniprot

Q8IWB7

Synonyms:

WD repeat and FYVE domain-containing protein 1 (FENS-1) (Phosphoinositide-binding protein 1) (WD40- and FYVE domain-containing protein 1) (Zinc finger FYVE domain-containing protein 17), WDFY1, KIAA1435 WDF1 ZFYVE17

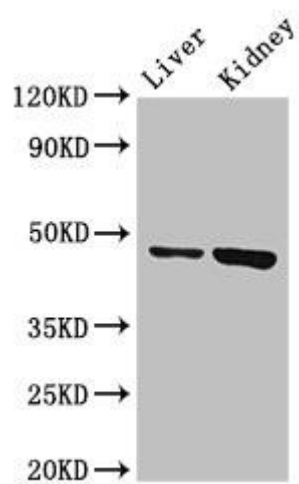
Immunogen:

Recombinant Human WD repeat and FYVE domain-containing protein 1 protein (261-357AA).

Storage:

Preservative: 0.03% Proclin 300. Constituents: 50% Glycerol, 0.01M PBS, PH 7.4

Product Images



Western Blot. Positive WB detected in: Mouse liver tissue, Mouse kidney tissue. All lanes: WDFY1 antibody at 3 μ g/ml. Secondary. Goat polyclonal to rabbit IgG at 1/50000 dilution. Predicted band size: 47 kDa. Observed band size: 47 kDa.