

# SLC15A3 Antibody



PACO49230

---

## Product Information

**Size:**

50ug

**Reactivity:**

Human, Mouse

**Source:**

Rabbit

**Isotype:**

IgG

**Applications:**

ELISA, WB, IHC

**Recommended dilutions:**

ELISA:1:2000-1:10000, WB:1:500-1:5000,  
IHC:1:20-1:200

**Protein Background:**

Proton oligopeptide cotransporter. Transports free histidine and certain di- and tripeptides.

**Gene ID:**

SLC15A3

**Uniprot**

Q8IY34

**Synonyms:**

Solute carrier family 15 member 3 (Osteoclast transporter) (Peptide transporter 3) (Peptide/histidine transporter 2), SLC15A3, OCTP PHT2 PTR3

**Immunogen:**

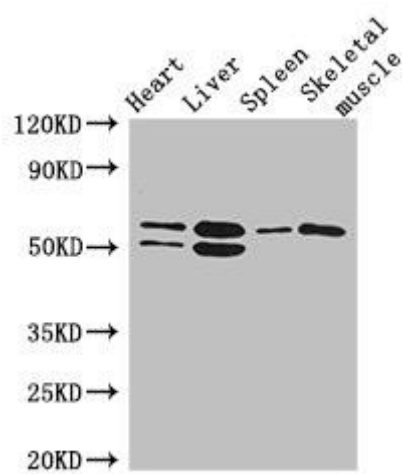
Recombinant Human Solute carrier family 15 member 3 protein (253-309AA).

**Storage:**

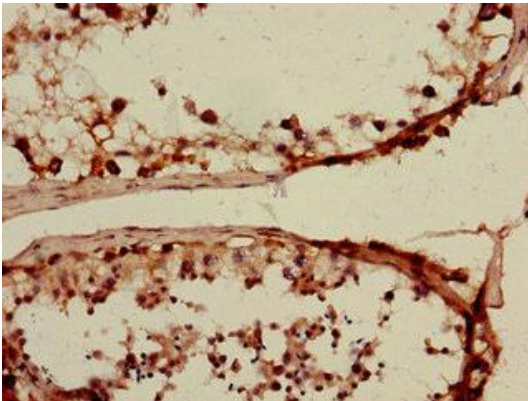
Preservative: 0.03% Proclin 300. Constituents: 50% Glycerol, 0.01M PBS, PH 7.4

## Product Images

---



Western Blot. Positive WB detected in: Mouse heart tissue, Mouse liver tissue, Mouse spleen tissue, Mouse skeletal muscle tissue. All lanes: SLC15A3 antibody at 5 $\mu$ g/ml. Secondary. Goat polyclonal to rabbit IgG at 1/50000 dilution. Predicted band size: 64 kDa. Observed band size: 64, 50 kDa.



Immunohistochemistry of paraffin-embedded human testis tissue using PACO49230 at dilution of 1:100.