

PACO49130

---

## Product Information

**Size:**

50ug

**Reactivity:**

Human

**Source:**

Rabbit

**Isotype:**

IgG

**Applications:**

ELISA, IF

**Recommended dilutions:**

ELISA:1:2000-1:10000, IF:1:50-1:200

**Protein Background:**

Forms a water-specific channel that provides the plasma membranes of renal collecting duct with high permeability to water, thereby permitting water to move in the direction of an osmotic gradient.

**Gene ID:**

AQP2

**Uniprot**

P41181

**Synonyms:**

Aquaporin-2 (AQP-2) (ADH water channel) (Aquaporin-CD) (AQP-CD) (Collecting duct water channel protein) (WCH-CD) (Water channel protein for renal collecting duct), AQP2

**Immunogen:**

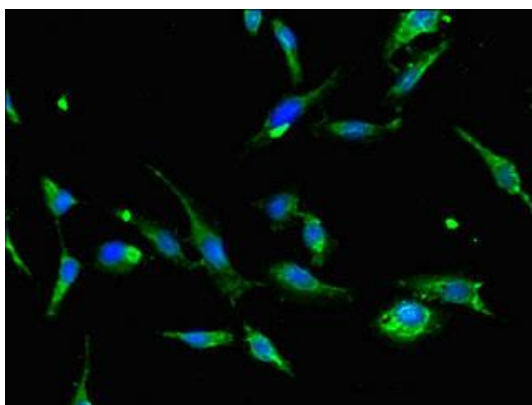
Recombinant Human Aquaporin-2 protein (225-271AA).

**Storage:**

Preservative: 0.03% Proclin 300. Constituents: 50% Glycerol, 0.01M PBS, PH 7.4

## Product Images

---



Immunofluorescent analysis of HeLa cells using PACO49130 at dilution of 1:100 and Alexa Fluor 488-conjugated AffiniPure Goat Anti-Rabbit IgG(H+L).