

PACO49042

---

## Product Information

**Size:**

50ug

**Reactivity:**

Human, Mouse

**Source:**

Rabbit

**Isotype:**

IgG

**Applications:**

ELISA, WB, IF

**Recommended dilutions:**

ELISA:1:2000-1:10000, WB:1:1000-1:5000,  
IF:1:50-1:500

**Protein Background:**

Ca(2+)-dependent actin filament-severing protein that is presumed to have a regulatory function in exocytosis by affecting the organization of the microfilament network underneath the plasma membrane. In vitro, also has barbed end capping and nucleating activities in the presence of Ca(2+). Regulates chondrocyte proliferation and differentiation. MAP kinases p38 and ERK1/2 mediate the adseverin-induced accelerated differentiation of non-hypertrophic chondrocytes.

**Gene ID:**

SCIN

**Uniprot**

Q9Y6U3

**Synonyms:**

Adseverin (Scinderin), SCIN, KIAA1905

**Immunogen:**

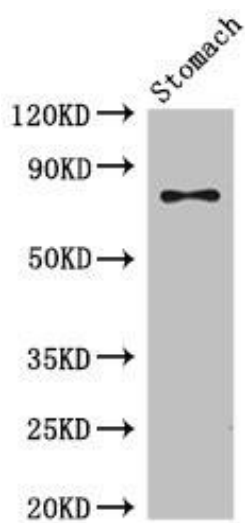
Recombinant Human Adseverin protein (556-703AA).

**Storage:**

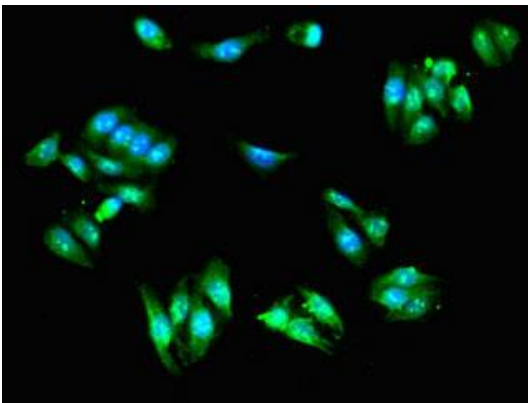
Preservative: 0.03% Proclin 300. Constituents: 50% Glycerol, 0.01M PBS, PH 7.4

## Product Images

---



Western Blot. Positive WB detected in: Mouse stomach tissue. All lanes: SCIN antibody at 3.5µg/ml. Secondary. Goat polyclonal to rabbit IgG at 1/50000 dilution. Predicted band size: 81, 66, 53 kDa. Observed band size: 81 kDa.



Immunofluorescent analysis of HepG2 cells using PACO49042 at dilution of 1:100 and Alexa Fluor 488-conjugated AffiniPure Goat Anti-Rabbit IgG(H+L).