

# SLC9A3R2 Antibody



PACO49026

---

## Product Information

**Size:**

50ug

**Reactivity:**

Human

**Source:**

Rabbit

**Isotype:**

IgG

**Applications:**

ELISA, WB, IHC

**Recommended dilutions:**

ELISA:1:2000-1:10000, WB:1:500-1:5000,  
IHC:1:20-1:200

**Protein Background:**

Scaffold protein that connects plasma membrane proteins with members of the ezrin/moesin/radixin family and thereby helps to link them to the actin cytoskeleton and to regulate their surface expression. Necessary for cAMP-mediated phosphorylation and inhibition of SLC9A3. May also act as scaffold protein in the nucleus.

**Gene ID:**

SLC9A3R2

**Uniprot**

Q15599

**Synonyms:**

Na(+)/H(+) exchange regulatory cofactor NHE-RF2 (NHERF-2) (NHE3 kinase A regulatory protein E3KARP) (SRY-interacting protein 1) (SIP-1) (Sodium-hydrogen exchanger regulatory factor 2) (Solute carrier family 9 isoform A3 regulatory factor 2) (Tyrosine kinase activator protein 1) (TKA-1), SLC9A3R2, NHERF2

**Immunogen:**

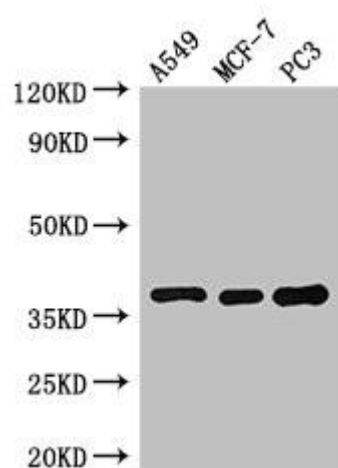
Recombinant Human Na(+)/H(+) exchange regulatory cofactor NHE-RF2 protein (106-313AA).

**Storage:**

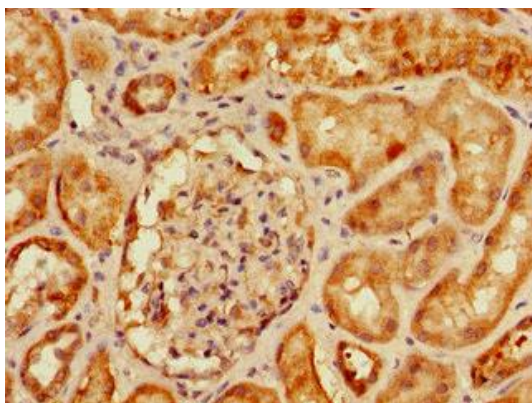
Preservative: 0.03% Proclin 300. Constituents: 50% Glycerol, 0.01M PBS, PH 7.4

## Product Images

---



Western Blot. Positive WB detected in: A549 whole cell lysate, MCF-7 whole cell lysate, PC-3 whole cell lysate. All lanes: SLC9A3R2 antibody at 3 $\mu$ g/ml. Secondary. Goat polyclonal to rabbit IgG at 1/50000 dilution. Predicted band size: 38, 37, 25 kDa. Observed band size: 38 kDa.



Immunohistochemistry of paraffin-embedded human kidney tissue using PACO49026 at dilution of 1:100.