

ERAL1 Antibody



PACO48894

Product Information

Size:

50ug

Reactivity:

Human

Source:

Rabbit

Isotype:

IgG

Applications:

ELISA, IHC, IF

Recommended dilutions:

ELISA:1:2000-1:10000, IHC:1:20-1:200,
IF:1:50-1:200

Protein Background:

Probable GTPase that plays a role in the mitochondrial ribosomal small subunit assembly. Specifically binds the 12S mitochondrial rRNA (12S mt-rRNA) to a 33 nucleotide section delineating the 3' terminal stem-loop region. May act as a chaperone that protects the 12S mt-rRNA on the 28S mitoribosomal subunit during ribosomal small subunit assembly.

Gene ID:

ERAL1

Uniprot

O75616

Synonyms:

GTPase Era, mitochondrial (H-ERA) (hERA) (Conserved ERA-like GTPase) (CEGA) (ERA-W) (ERA-like protein 1), ERAL1, HERA

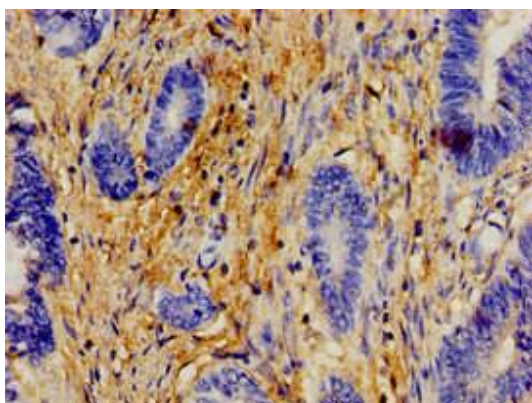
Immunogen:

Recombinant Human GTPase Era, mitochondrial protein (271-382AA).

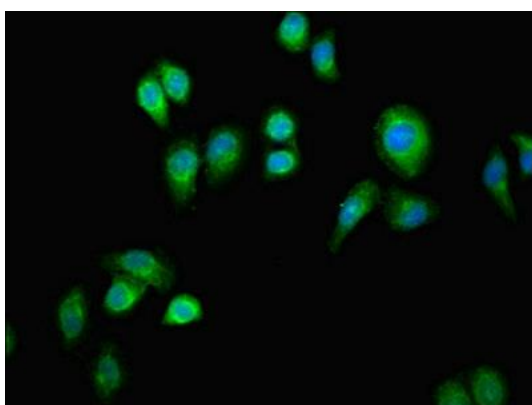
Storage:

Preservative: 0.03% Proclin 300. Constituents: 50% Glycerol, 0.01M PBS, PH 7.4

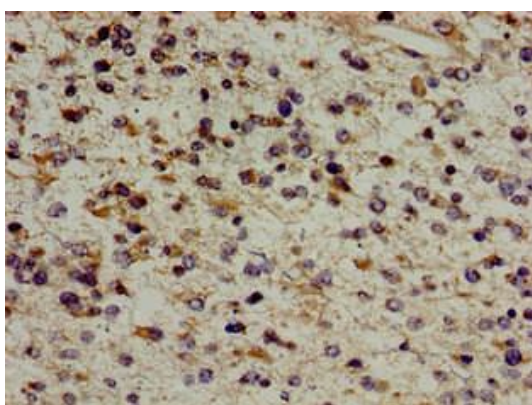
Product Images



Immunohistochemistry of paraffin-embedded human colon cancer using PACO48894 at dilution of 1:100.



Immunofluorescent analysis of A549 cells using PACO48894 at dilution of 1:100 and Alexa Fluor 488-conjugated AffiniPure Goat Anti-Rabbit IgG(H+L).



Immunohistochemistry of paraffin-embedded human glioma using PACO48894 at dilution of 1:100.