

# EPHA4 Antibody



PACO48890

---

## Product Information

**Size:**

50ug

**Reactivity:**

Human

**Source:**

Rabbit

**Isotype:**

IgG

**Applications:**

ELISA, IHC, IF

**Recommended dilutions:**

ELISA:1:2000-1:10000, IHC:1:20-1:200,  
IF:1:50-1:200

**Protein Background:**

**Gene ID:**

EPHA4

**Uniprot**

P54764

**Synonyms:**

Ephrin type-A receptor 4 (EC 2.7.10.1) (EPH-like kinase 8) (EK8) (hEK8) (Tyrosine-protein kinase TYRO1) (Tyrosine-protein kinase receptor SEK), EPHA4, HEK8 SEK TYRO1

**Immunogen:**

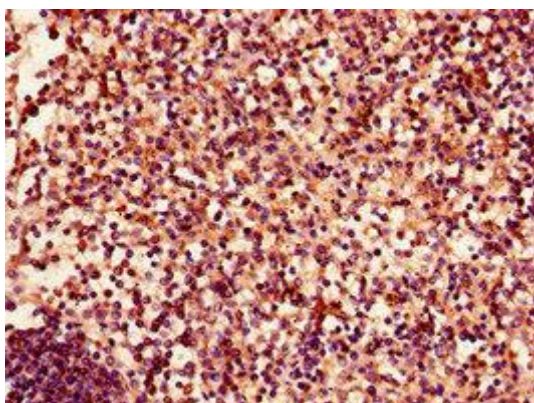
Recombinant Human Ephrin type-A receptor 4 protein (345-545AA).

**Storage:**

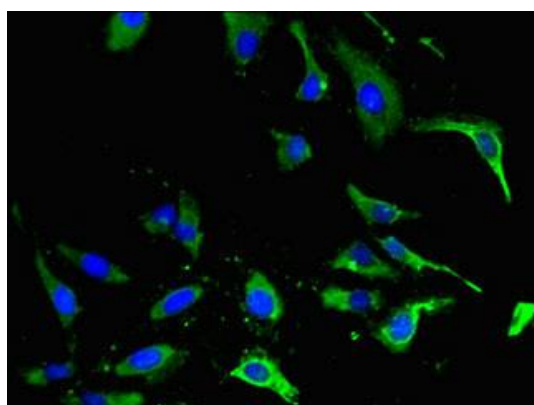
Preservative: 0.03% Proclin 300. Constituents: 50% Glycerol, 0.01M PBS, PH 7.4

## Product Images

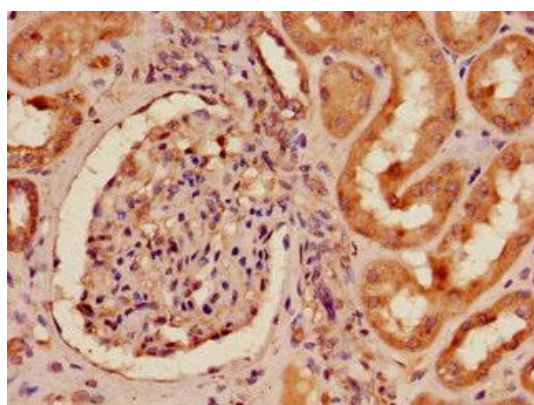
---



Immunohistochemistry of paraffin-embedded human spleen tissue using PACO48890 at dilution of 1:100.



Immunofluorescent analysis of HeLa cells using PACO48890 at dilution of 1:100 and Alexa Fluor 488-conjugated AffiniPure Goat Anti-Rabbit IgG(H+L).



Immunohistochemistry of paraffin-embedded human kidney tissue using PACO48890 at dilution of 1:100.