

PACO48870

Product Information

Size:

50ug

Reactivity:

Human, Mouse

Source:

Rabbit

Isotype:

IgG

Applications:

ELISA, WB, IHC, IF

Recommended dilutions:

ELISA:1:2000-1:10000, WB:1:500-1:5000,
IHC:1:20-1:200, IF:1:50-1:200

Protein Background:

Catalyzes specifically the phosphorylation of ceramide to form ceramide 1-phosphate. Acts efficiently on natural and analog ceramides (C6, C8, C16 ceramides, and C8-dihydroceramide), to a lesser extent on C2-ceramide and C6-dihydroceramide, but not on other lipids, such as various sphingosines. Binds phosphoinositides.

Gene ID:

CERK

Uniprot

Q8TCT0

Synonyms:

Ceramide kinase (hCERK) (EC 2.7.1.138) (Acylsphingosine kinase) (Lipid kinase 4) (LK4), CERK, KIAA1646

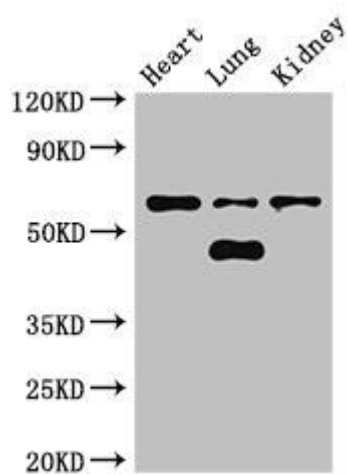
Immunogen:

Recombinant Human Ceramide kinase protein (212-478AA).

Storage:

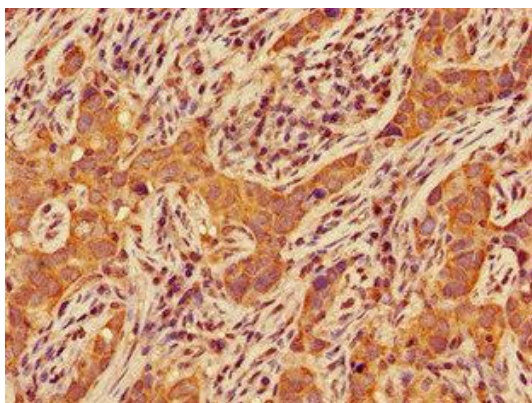
Preservative: 0.03% Proclin 300. Constituents: 50% Glycerol, 0.01M PBS, PH 7.4

Product Images

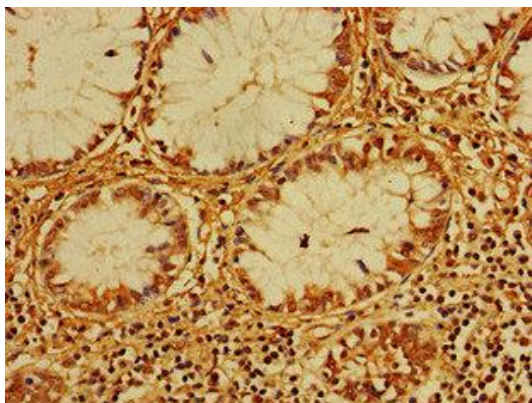


Western Blot. Positive WB detected in: Mouse heart tissue, Mouse lung tissue, Mouse kidney tissue. All lanes: CERK antibody at 3 μ g/ml. Secondary: Goat polyclonal to rabbit IgG at 1/50000 dilution. Predicted band size: 60, 38 kDa

Observed band size: 60, 48 kDa



Immunohistochemistry of paraffin-embedded human pancreatic cancer using PACO48870 at dilution of 1:100.



Immunohistochemistry of paraffin-embedded human colon cancer using PACO48870 at dilution of 1:100.