

AJAP1 Antibody



PACO48798

Product Information

Size:

50ug

Reactivity:

Human, Mouse

Source:

Rabbit

Isotype:

IgG

Applications:

ELISA, WB, IHC

Recommended dilutions:

ELISA:1:2000-1:10000, WB:1:500-1:5000,
IHC:1:20-1:200

Protein Background:

Plays a role in cell adhesion and cell migration.

Gene ID:

AJAP1

Uniprot

Q9UKB5

Synonyms:

Adherens junction-associated protein 1 (Membrane protein shrew-1), AJAP1, MOT8 SHREW1

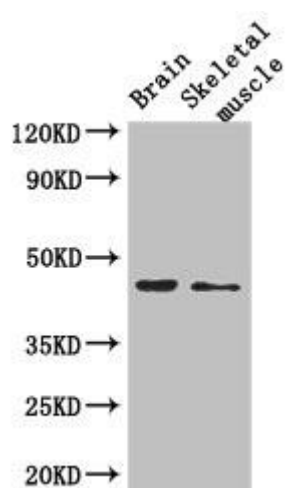
Immunogen:

Recombinant Human Adherens junction-associated protein 1 protein (308-394AA).

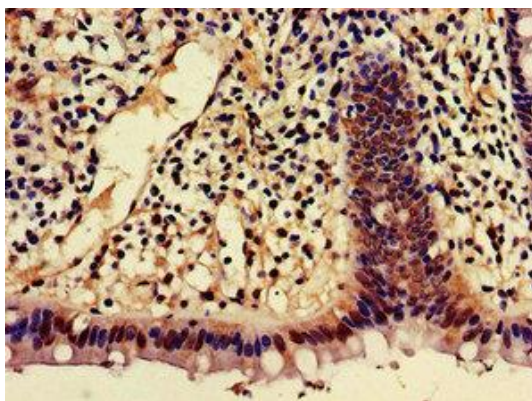
Storage:

Preservative: 0.03% Proclin 300. Constituents: 50% Glycerol, 0.01M PBS, PH 7.4

Product Images



Western Blot. Positive WB detected in: Mouse brain tissue, Mouse skeletal muscle tissue. All lanes: AJAP1 antibody at 2.7 μ g/ml. Secondary. Goat polyclonal to rabbit IgG at 1/50000 dilution. Predicted band size: 45 kDa. Observed band size: 45 kDa.



Immunohistochemistry of paraffin-embedded human colon cancer using PACO48798 at dilution of 1:100.