

MS4A6A Antibody



PACO48750

Product Information

Size:

50ug

Reactivity:

Human

Source:

Rabbit

Isotype:

IgG

Applications:

ELISA, IF

Recommended dilutions:

ELISA:1:2000-1:10000, IF:1:50-1:200

Protein Background:

May be involved in signal transduction as a component of a multimeric receptor complex.

Gene ID:

MS4A6A

Uniprot

Q9H2W1

Synonyms:

Membrane-spanning 4-domains subfamily A member 6A (CD20 antigen-like 3) (Four-span transmembrane protein 3), MS4A6A, 4SPAN3 CD20L3 MS4A6

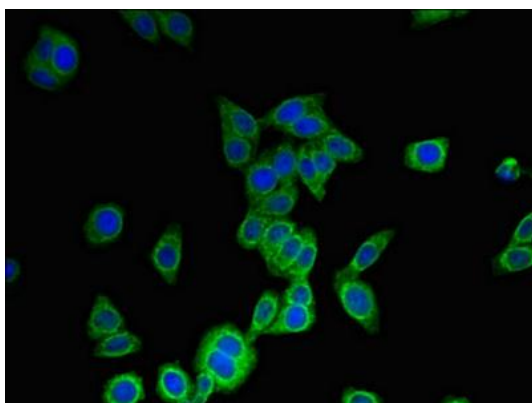
Immunogen:

Recombinant Human Membrane-spanning 4-domains subfamily A member 6A protein (1-36AA).

Storage:

Preservative: 0.03% Proclin 300. Constituents: 50% Glycerol, 0.01M PBS, PH 7.4

Product Images



Immunofluorescent analysis of HepG2 cells using PACO48750 at dilution of 1:100 and Alexa Fluor 488-conjugated AffiniPure Goat Anti-Rabbit IgG(H+L).