

PACO48730

Product Information

Size:

50ug

Reactivity:

Human

Source:

Rabbit

Isotype:

IgG

Applications:

ELISA, IHC, IF

Recommended dilutions:

ELISA:1:2000-1:10000, IHC:1:20-1:200,
IF:1:50-1:200

Protein Background:

Catalytic component of a P4-ATPase flippase complex which catalyzes the hydrolysis of ATP coupled to the transport of aminophospholipids from the outer to the inner leaflet of various membranes and ensures the maintenance of asymmetric distribution of phospholipids. Phospholipid translocation seems also to be implicated in vesicle formation and in uptake of lipid signaling molecules. Reconstituted to liposomes, the ATP8A2: TMEM30A flippase complex predominantly transports phosphatidylserine (PS) and to a lesser extent phosphatidylethanolamine (PE). Proposed to function in the generation and maintenance of phospholipid asymmetry in photoreceptor disk membranes and neuronal axon membranes. May be involved in vesicle trafficking in neuronal cells. Involved in regulation of neurite outgrowth; acting in synergy with TMEM30A. Required for normal visual and auditory function; involved in photoreceptor and inner ear spiral ganglion cell survival.

Gene ID:

ATP8A2

Uniprot

Q9NTI2

Synonyms:

Phospholipid-transporting ATPase IB (EC 3.6.3.1) (ATPase class I type 8A member 2) (ML-1) (P4-ATPase flippase complex alpha subunit ATP8A2), ATP8A2, ATPIB

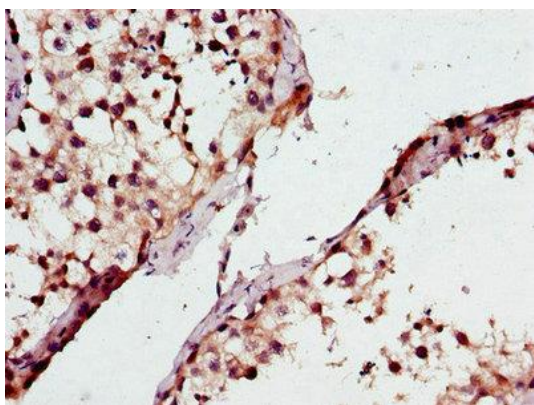
Immunogen:

Recombinant Human Phospholipid-transporting ATPase IB protein (358-570AA).

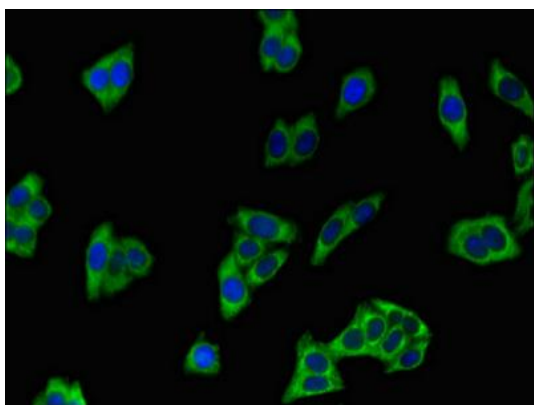
Storage:

Preservative: 0.03% Proclin 300. Constituents: 50% Glycerol, 0.01M PBS, PH 7.4

Product Images



Immunohistochemistry of paraffin-embedded human testis tissue using PACO48730 at dilution of 1:100.



Immunofluorescent analysis of HepG2 cells using PACO48730 at dilution of 1:100 and Alexa Fluor 488-conjugated AffiniPure Goat Anti-Rabbit IgG(H+L).