

SPPL3 Antibody



PACO48706

Product Information

Size:

50ug

Reactivity:

Human

Source:

Rabbit

Isotype:

IgG

Applications:

ELISA, WB, IF

Recommended dilutions:

ELISA:1:2000-1:10000, WB:1:200-1:2000,
IF:1:50-1:200

Protein Background:

Gene ID:

SPPL3

Uniprot

Q8TCT6

Synonyms:

Signal peptide peptidase-like 3 (SPP-like 3) (EC 3.4.23) (Intramembrane protease 2) (IMP-2) (Presenilin homologous protein 1) (PSH1) (Presenilin-like protein 4), SPPL3, IMP2 PSL4

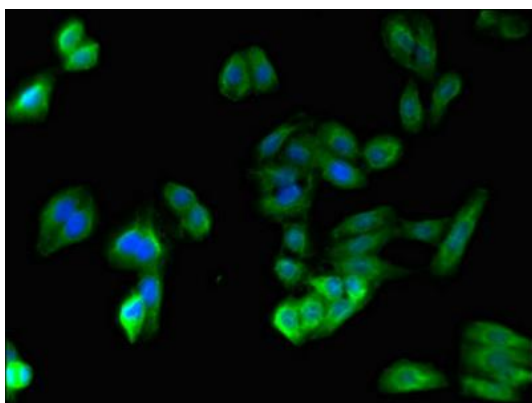
Immunogen:

Recombinant Human Signal peptide peptidase-like 3 protein (213-263AA).

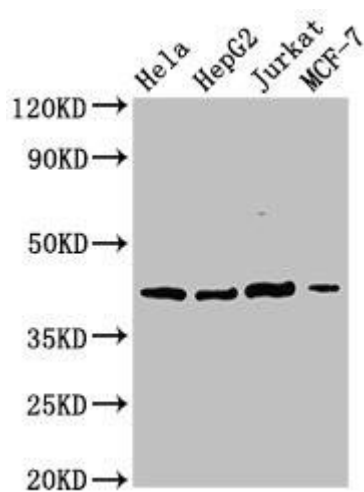
Storage:

Preservative: 0.03% Proclin 300. Constituents: 50% Glycerol, 0.01M PBS, PH 7.4

Product Images



Immunofluorescent analysis of HepG2 cells using PACO48706 at dilution of 1:100 and Alexa Fluor 488-conjugated AffiniPure Goat Anti-Rabbit IgG(H+L).



Western Blot. Positive WB detected in: HeLa whole cell lysate, HepG2 whole cell lysate, Jurkat whole cell lysate, MCF-7 whole cell lysate. All lanes: SPPL3 antibody at 3 μ g/ml. Secondary. Goat polyclonal to rabbit IgG at 1/50000 dilution. Predicted band size: 43, 19 kDa. Observed band size: 43 kDa.