

SLC37A2 Antibody



PACO48682

Product Information

Size:

50ug

Reactivity:

Human, Mouse

Source:

Rabbit

Isotype:

IgG

Applications:

ELISA, WB, IHC, IF

Recommended dilutions:

ELISA:1:2000-1:10000, WB:1:500-1:5000,
IHC:1:20-1:200, IF:1:50-1:200

Protein Background:

Inorganic phosphate and glucose-6-phosphate antiporter. May transport cytoplasmic glucose-6-phosphate into the lumen of the endoplasmic reticulum and translocate inorganic phosphate into the opposite direction. Independent of a luminal glucose-6-phosphatase. May not play a role in homeostatic regulation of blood glucose levels.

Gene ID:

SLC37A2

Uniprot

Q8TED4

Synonyms:

Glucose-6-phosphate exchanger SLC37A2 (Solute carrier family 37 member 2),
SLC37A2

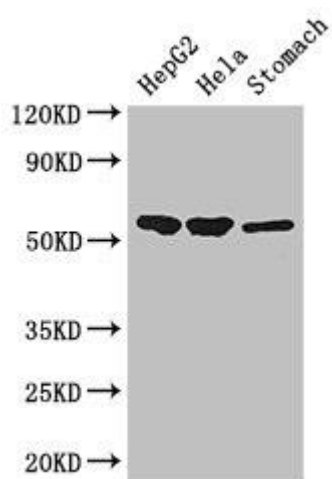
Immunogen:

Recombinant Human Glucose-6-phosphate exchanger SLC37A2 protein (46-84AA).

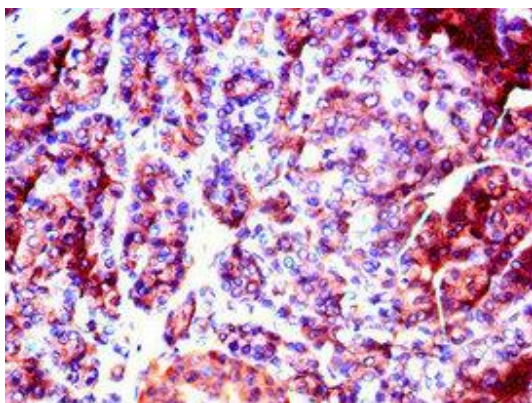
Storage:

Preservative: 0.03% Proclin 300. Constituents: 50% Glycerol, 0.01M PBS, PH 7.4

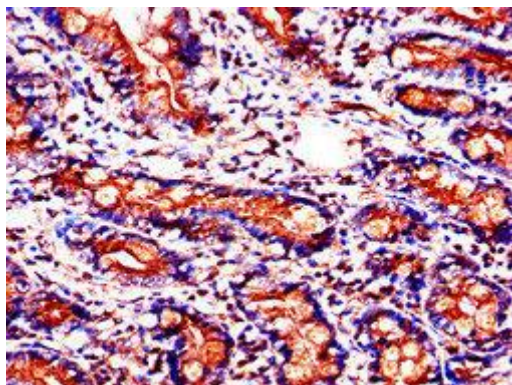
Product Images



Western Blot. Positive WB detected in: HepG2 whole cell lysate, HeLa whole cell lysate, Mouse stomach tissue. All lanes: SLC37A2 antibody at 3 μ g/ml. Secondary. Goat polyclonal to rabbit IgG at 1/50000 dilution. Predicted band size: 55, 43, 14 kDa. Observed band size: 55 kDa.



Immunohistochemistry of paraffin-embedded human pancreatic tissue using PACO48682 at dilution of 1:100.



Immunohistochemistry of paraffin-embedded human small intestine tissue using PACO48682 at dilution of 1:100.