

KBTBD6 Antibody



PACO48670

Product Information

Size:

50ug

Reactivity:

Human

Source:

Rabbit

Isotype:

IgG

Applications:

ELISA, WB, IHC, IF

Recommended dilutions:

ELISA:1:2000-1:10000, WB:1:500-1:5000,
IHC:1:20-1:200, IF:1:50-1:200

Protein Background:

Cul3-RING ubiquitin ligase complex.

Gene ID:

KBTBD6

Uniprot

Q86V97

Synonyms:

Kelch repeat and BTB domain-containing protein 6, KBTBD6

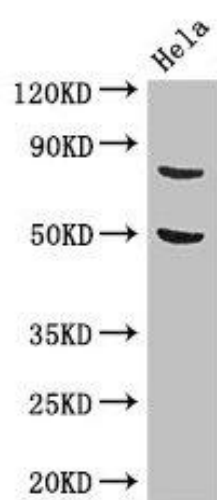
Immunogen:

Recombinant Human Kelch repeat and BTB domain-containing protein 6 protein (1-139AA).

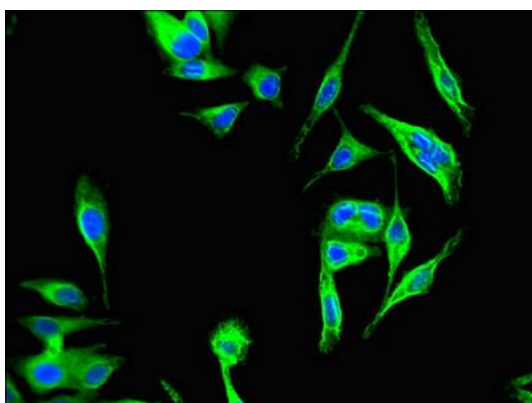
Storage:

Preservative: 0.03% Proclin 300. Constituents: 50% Glycerol, 0.01M PBS, PH 7.4

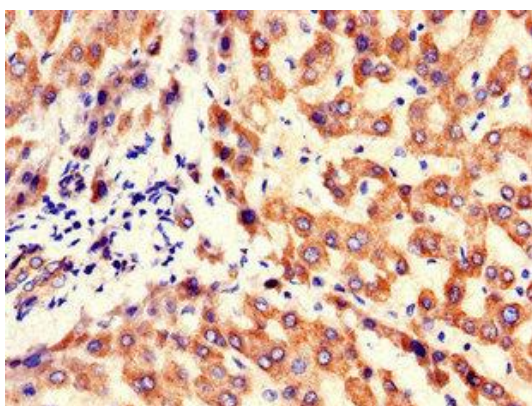
Product Images



Western Blot. Positive WB detected in: HeLa whole cell lysate. All lanes: KBTBD6 antibody at 3.4 μ g/ml. Secondary. Goat polyclonal to rabbit IgG at 1/50000 dilution. Predicted band size: 77 kDa. Observed band size: 77 kDa.



Immunofluorescent analysis of HeLa cells using PACO48670 at dilution of 1:100 and Alexa Fluor 488-conjugated AffiniPure Goat Anti-Rabbit IgG(H+L).



Immunohistochemistry of paraffin-embedded human liver tissue using PACO48670 at dilution of 1:100.