

Product Information

Size:

50ug

Reactivity:

Human, Mouse

Source:

Rabbit

Isotype:

IgG

Applications:

ELISA, WB

Recommended dilutions:

ELISA:1:2000-1:10000, WB:1:500-1:5000

Protein Background:

Carboxylesterase that acts as a key negative regulator of the Wnt signaling pathway by specifically mediating depalmitoylation of WNT proteins. Serine palmitoylation of WNT proteins is required for efficient binding to frizzled receptors.

Gene ID:

NOTUM

Uniprot

Q6P988

Synonyms:

Palmitoleoyl-protein carboxylesterase NOTUM (EC 3.1.1.98) (hNOTUM), NOTUM

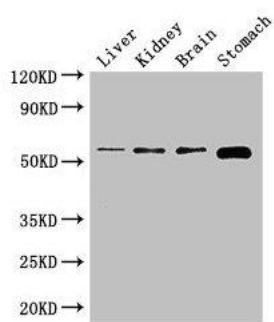
Immunogen:

Recombinant Human Palmitoleoyl-protein carboxylesterase NOTUM protein (100-235AA).

Storage:

Preservative: 0.03% Proclin 300. Constituents: 50% Glycerol, 0.01M PBS, PH 7.4

Product Images



Western Blot. Positive WB detected in: Mouse liver tissue, Mouse kidney tissue, Mouse brain tissue, Mouse stomach tissue. All lanes: NOTUM antibody at 2.7 μ g/ml. Secondary. Goat polyclonal to rabbit IgG at 1/50000 dilution. Predicted band size: 56 kDa. Observed band size: 56 kDa.