

Plbd2 Antibody



PACO48622

Product Information

Size:

50ug

Reactivity:

Rat, Mouse

Source:

Rabbit

Isotype:

IgG

Applications:

ELISA, WB

Recommended dilutions:

ELISA:1:2000-1:10000, WB:1:500-1:5000

Protein Background:

Putative phospholipase.

Gene ID:

Plbd2

Uniprot

Q4QQW8

Synonyms:

Putative phospholipase B-like 2 (EC 3.1.1) (LAMA-like protein 2) (Lamina ancestor homolog 2) (Phospholipase B domain-containing protein 2), Plbd2

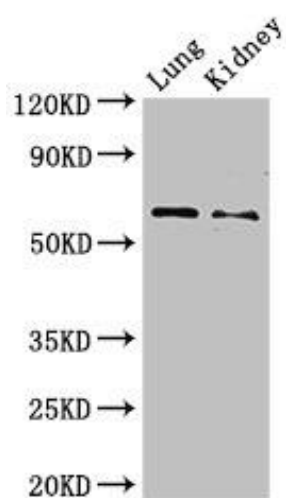
Immunogen:

Recombinant Rat Putative phospholipase B-like 2 protein (36-585AA).

Storage:

Preservative: 0.03% Proclin 300. Constituents: 50% Glycerol, 0.01M PBS, PH 7.4

Product Images



Western Blot. Positive WB detected in: Mouse lung tissue, Mouse kidney tissue. All lanes: Plbd2 antibody at 3 μ g/ml. Secondary. Goat polyclonal to rabbit IgG at 1/50000 dilution. Predicted band size: 66 kDa. Observed band size: 66 kDa.