

Product Information

Size:

50ug

Reactivity:

Human, Mouse

Source:

Rabbit

Isotype:

IgG

Applications:

ELISA, WB, IF

Recommended dilutions:

ELISA:1:2000-1:10000, WB:1:2000-1:10000,
IF:1:50-1:200

Protein Background:

Catalyzes the reversible phosphorylation of S-methyl-5'-thioadenosine (MTA) to adenine and 5-methylthioribose-1-phosphate. Involved in the breakdown of MTA, a major by-product of polyamine biosynthesis. Responsible for the first step in the methionine salvage pathway after MTA has been generated from S-adenosylmethionine. Has broad substrate specificity with 6-aminopurine nucleosides as preferred substrates.

Gene ID:

MTAP

Uniprot

Q13126

Synonyms:

S-methyl-5'-thioadenosine phosphorylase (EC 2.4.2.28) (5'-methylthioadenosine phosphorylase) (MTA phosphorylase) (MTAP) (MTAPase), MTAP, MSAP

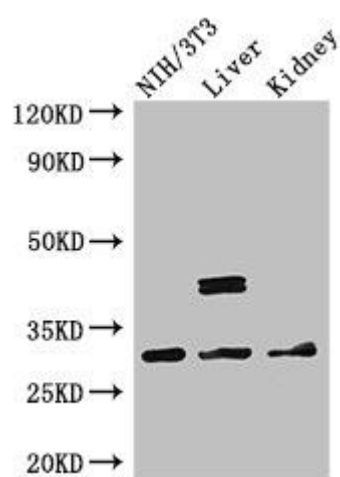
Immunogen:

Recombinant Human S-methyl-5'-thioadenosine phosphorylase protein (1-283AA).

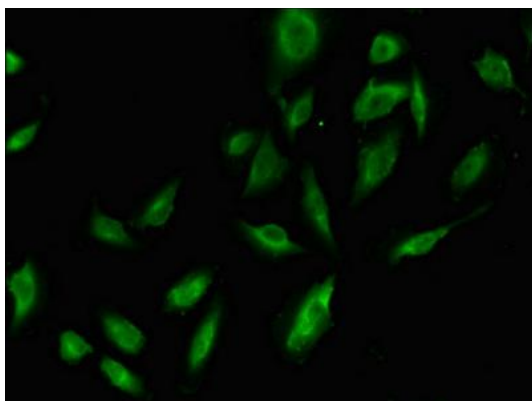
Storage:

Preservative: 0.03% Proclin 300. Constituents: 50% Glycerol, 0.01M PBS, PH 7.4

Product Images



Western Blot. Positive WB detected in: NIH/3T3 whole cell lysate, Mouse liver tissue, Mouse kidney tissue. All lanes: MTAP antibody at 2.7 μ g/ml. Secondary: Goat polyclonal to rabbit IgG at 1/50000 dilution. Predicted band size: 32, 39, 37, 31, 34, 33, 27 kDa. Observed band size: 32, 39 kDa.



Immunofluorescent analysis of U251 cells using PACO48606 at dilution of 1:100 and Alexa Fluor 488-conjugated AffiniPure Goat Anti-Rabbit IgG(H+L).