

KIF14 Antibody



PACO48570

Product Information

Size:

50ug

Reactivity:

Human

Source:

Rabbit

Isotype:

IgG

Applications:

ELISA, IHC, IF

Recommended dilutions:

ELISA:1:2000-1:10000, IHC:1:20-1:200,
IF:1:50-1:200

Protein Background:**Gene ID:**

KIF14

Uniprot

Q15058

Synonyms:

Kinesin-like protein KIF14, KIF14, KIAA0042

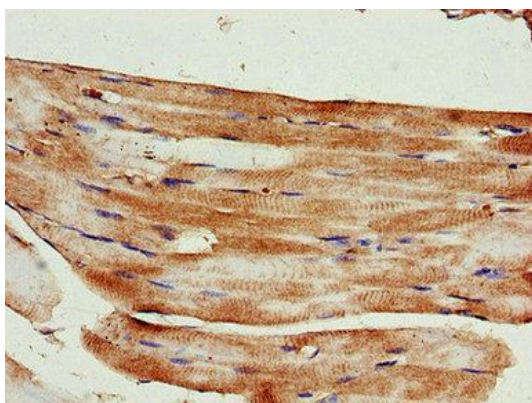
Immunogen:

Recombinant Human Kinesin-like protein KIF14 protein (261-531AA).

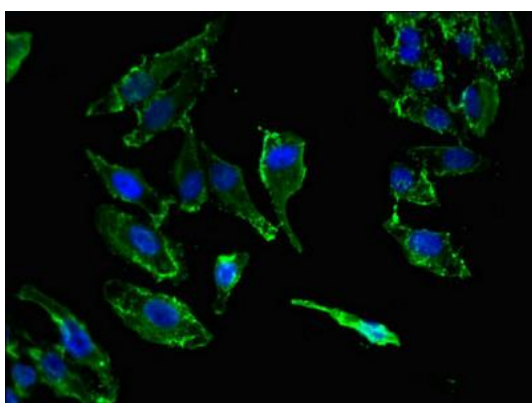
Storage:

Preservative: 0.03% Proclin 300. Constituents: 50% Glycerol, 0.01M PBS, PH 7.4

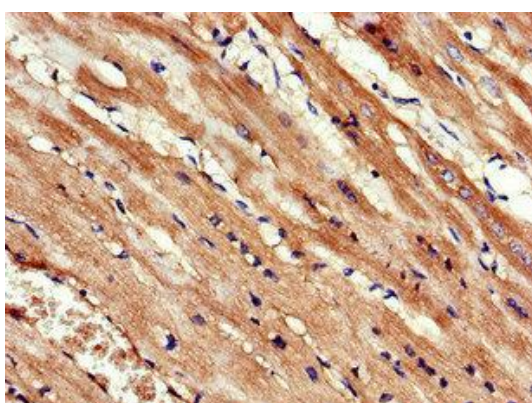
Product Images



Immunohistochemistry of paraffin-embedded human skeletal muscle tissue using PACO48570 at dilution of 1:100.



Immunofluorescent analysis of HepG2 cells using PACO48570 at dilution of 1:100 and Alexa Fluor 488-conjugated AffiniPure Goat Anti-Rabbit IgG(H+L).



Immunohistochemistry of paraffin-embedded human heart tissue using PACO48570 at dilution of 1:100.