

# SIK1 Antibody



PACO48466

---

## Product Information

**Size:**

50ug

**Reactivity:**

Human

**Source:**

Rabbit

**Isotype:**

IgG

**Applications:**

ELISA, IHC, IF

**Recommended dilutions:**

ELISA:1:2000-1:10000, IHC:1:20-1:200,  
IF:1:50-1:200

**Protein Background:****Gene ID:**

SIK1

**Uniprot**

P57059

**Synonyms:**

Serine/threonine-protein kinase SIK1 (EC 2.7.11.1) (Salt-inducible kinase 1) (SIK-1) (Serine/threonine-protein kinase SNF1-like kinase 1) (Serine/threonine-protein kinase SNF1LK), SIK1, SIK SNF1LK

**Immunogen:**

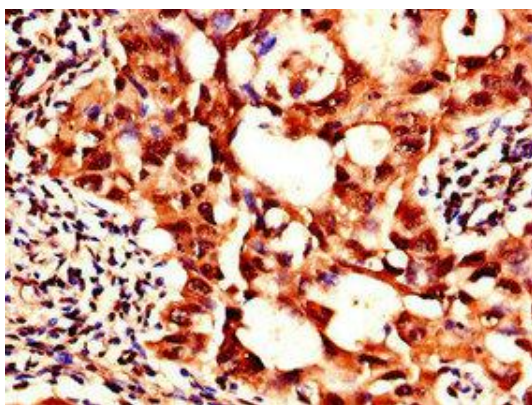
Recombinant Human Serine/threonine-protein kinase SIK1 protein (492-750AA).

**Storage:**

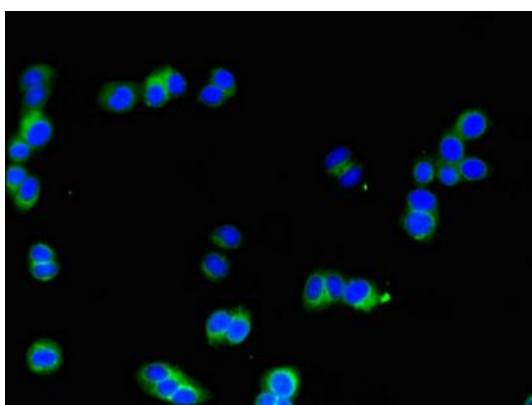
Preservative: 0.03% Proclin 300. Constituents: 50% Glycerol, 0.01M PBS, PH 7.4

## Product Images

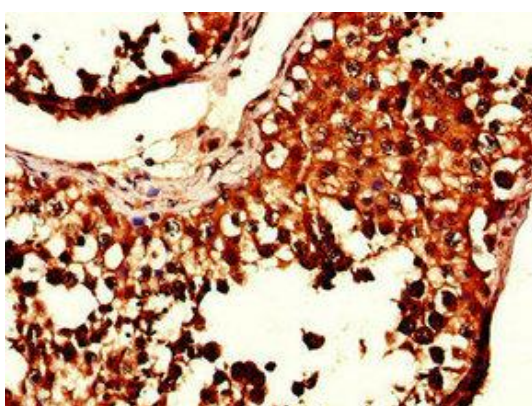
---



Immunohistochemistry of paraffin-embedded human lung cancer using PACO48466 at dilution of 1:100.



Immunofluorescent analysis of HepG2 cells using PACO48466 at dilution of 1:100 and Alexa Fluor 488-conjugated AffiniPure Goat Anti-Rabbit IgG(H+L).



Immunohistochemistry of paraffin-embedded human testis tissue using PACO48466 at dilution of 1:100.