

PACO48438

---

## Product Information

**Size:**

50ug

**Reactivity:**

Human, Rat

**Source:**

Rabbit

**Isotype:**

IgG

**Applications:**

ELISA, WB, IHC, IF

**Recommended dilutions:**

ELISA:1:2000-1:10000, WB:1:500-1:5000,  
IHC:1:20-1:200, IF:1:50-1:200

**Protein Background:**

Synthesis and degradation of fructose 2,6-bisphosphate.

**Gene ID:**

PFKFB2

**Uniprot**

O60825

**Synonyms:**

6-phosphofructo-2-kinase/fructose-2,6-bisphosphatase 2 (6PF-2-K/Fru-2,6-P2ase 2) (PFK/FBPase 2) (6PF-2-K/Fru-2,6-P2ase heart-type isozyme) [Includes: 6-phosphofructo-2-kinase (EC 2.7.1.105); Fructose-2,6-bisphosphatase (EC 3.1.3.46)], PFKFB2

**Immunogen:**

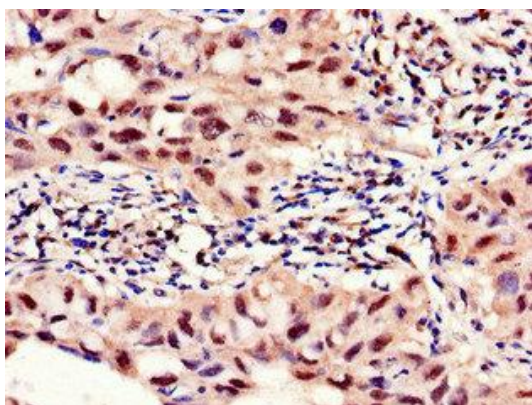
Recombinant Human 6-phosphofructo-2-kinase/fructose-2,6-bisphosphatase 2 protein (360-505AA).

**Storage:**

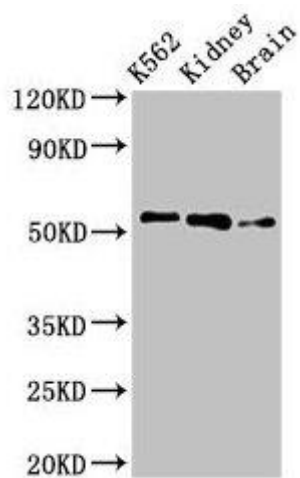
Preservative: 0.03% Proclin 300. Constituents: 50% Glycerol, 0.01M PBS, PH 7.4

## Product Images

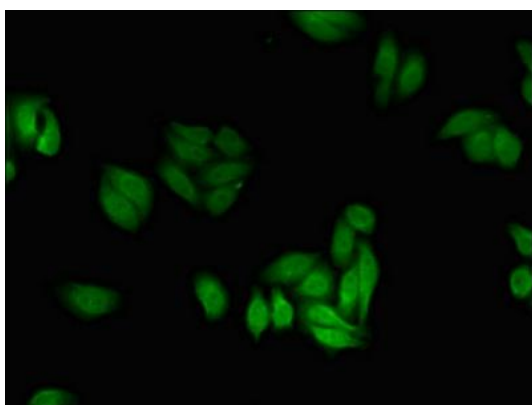
---



Immunohistochemistry of paraffin-embedded human lung cancer using PACO48438 at dilution of 1:100.



Western Blot. Positive WB detected in: K562 whole cell lysate, Rat kidney tissue, Rat brain tissue. All lanes: PFKFB2 antibody at 3 $\mu$ g/ml. Secondary. Goat polyclonal to rabbit IgG at 1/50000 dilution. Predicted band size: 59, 55 kDa. Observed band size: 55 kDa.



Immunofluorescent analysis of HepG2 cells using PACO48438 at dilution of 1:100 and Alexa Fluor 488-conjugated AffiniPure Goat Anti-Rabbit IgG(H+L).