

# ETS2 Antibody



PACO48326

---

## Product Information

**Size:**

50ug

**Reactivity:**

Human, Mouse

**Source:**

Rabbit

**Isotype:**

IgG

**Applications:**

ELISA, WB

**Recommended dilutions:**

ELISA:1:2000-1:10000, WB:1:500-1:5000

**Protein Background:**

Transcription factor activating transcription. Binds specifically the DNA GGAA/T core motif (Ets-binding site or EBS) in gene promoters and stimulates transcription.

**Gene ID:**

ETS2

**Uniprot**

P15036

**Synonyms:**

Protein C-ets-2, ETS2

**Immunogen:**

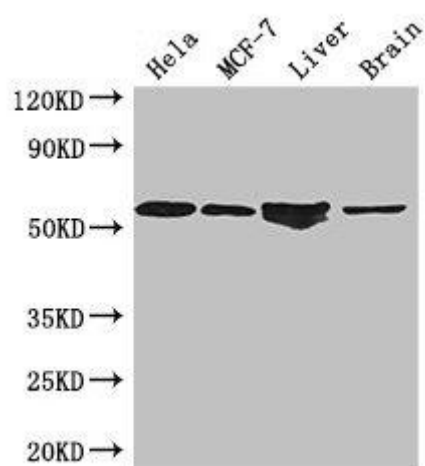
Recombinant Human Protein C-ets-2 protein (9-185AA).

**Storage:**

Preservative: 0.03% Proclin 300. Constituents: 50% Glycerol, 0.01M PBS, PH 7.4

## Product Images

---



Western Blot. Positive WB detected in: HeLa whole cell lysate, MCF-7 whole cell lysate, Mouse liver tissue, Mouse brain tissue. All lanes: ETS2 antibody at 2.7 $\mu$ g/ml. Secondary. Goat polyclonal to rabbit IgG at 1/50000 dilution. Predicted band size: 54 kDa. Observed band size: 54 kDa.