

CTRL Antibody



PACO48310

Product Information

Size:

50ug

Reactivity:

Human

Source:

Rabbit

Isotype:

IgG

Applications:

ELISA, IHC, IF

Recommended dilutions:

ELISA:1:2000-1:10000, IHC:1:20-1:200,
IF:1:50-1:200

Protein Background:

extracellular space, digestion, proteolysis.

Gene ID:

CTRL

Uniprot

P40313

Synonyms:

Chymotrypsin-like protease CTRL-1 (EC 3.4.21), CTRL, CTRL1

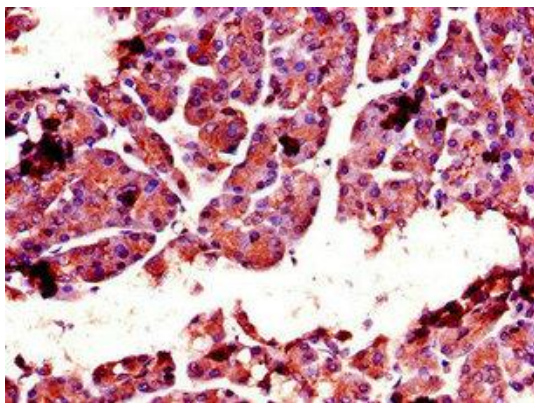
Immunogen:

Recombinant Human Chymotrypsin-like protease CTRL-1 protein (90-220AA).

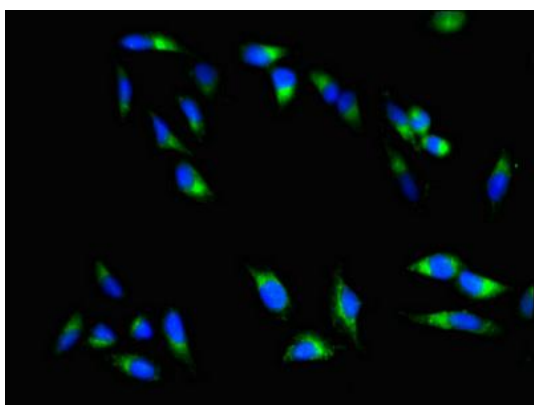
Storage:

Preservative: 0.03% Proclin 300. Constituents: 50% Glycerol, 0.01M PBS, PH 7.4

Product Images



Immunohistochemistry of paraffin-embedded human pancreatic tissue using PACO48310 at dilution of 1:100.



Immunofluorescent analysis of HeLa cells using PACO48310 at dilution of 1:100 and Alexa Fluor 488-conjugated AffiniPure Goat Anti-Rabbit IgG(H+L).