

PACO48294

Product Information

Size:

50ug

Reactivity:

Human

Source:

Rabbit

Isotype:

IgG

Applications:

ELISA, IF

Recommended dilutions:

ELISA:1:2000-1:10000, IF:1:50-1:200

Protein Background:

Calcium-binding protein critical for proper photoreceptor cell maintenance and function. Plays a role in intracellular calcium homeostasis by decreasing ATP-induced calcium release. May be involved in the mechanotransduction process.

Gene ID:

CIB2

Uniprot

O75838

Synonyms:

Calcium and integrin-binding family member 2 (Kinase-interacting protein 2) (KIP 2), CIB2, KIP2

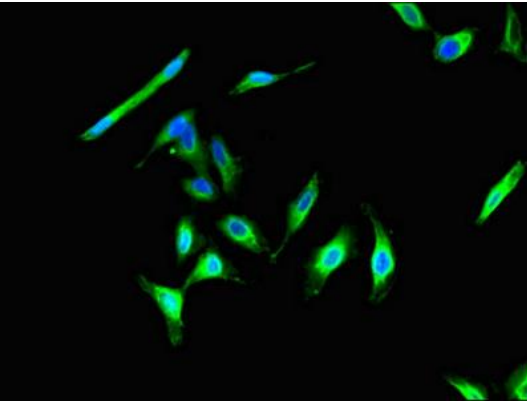
Immunogen:

Recombinant Human Calcium and integrin-binding family member 2 protein (65-164AA).

Storage:

Preservative: 0.03% Proclin 300. Constituents: 50% Glycerol, 0.01M PBS, PH 7.4

Product Images



Immunofluorescent analysis of HeLa cells using PACO48294 at dilution of 1:100 and Alexa Fluor 488-conjugated AffiniPure Goat Anti-Rabbit IgG(H+L).