

PACO48290

Product Information

Size:

50ug

Reactivity:

Human, Mouse

Source:

Rabbit

Isotype:

IgG

Applications:

ELISA, WB

Recommended dilutions:

ELISA:1:2000-1:10000, WB:1:500-1:5000

Protein Background:

Secretogranin-1 is a neuroendocrine secretory granule protein, which may be the precursor for other biologically active peptides.

Gene ID:

CHGB

Uniprot

P05060

Synonyms:

Secretogranin-1 (Chromogranin-B) (CgB) (Secretogranin I) (Sgl) [Cleaved into: PE-11; GAWK peptide; CCB peptide], CHGB, SCG1

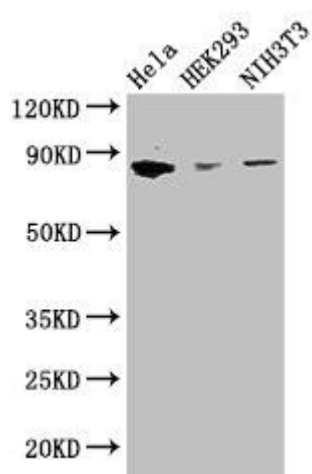
Immunogen:

Recombinant Human Secretogranin-1 protein (328-677AA).

Storage:

Preservative: 0.03% Proclin 300. Constituents: 50% Glycerol, 0.01M PBS, PH 7.4

Product Images



Western Blot. Positive WB detected in: HeLa whole cell lysate, HEK293 whole cell lysate, NIH/3T3 whole cell lysate. All lanes: CHGB antibody at 2.8µg/ml. Secondary. Goat polyclonal to rabbit IgG at 1/50000 dilution. Predicted band size: 79 kDa. Observed band size: 79 kDa.