

PACO48258

Product Information

Size:

50ug

Reactivity:

Human

Source:

Rabbit

Isotype:

IgG

Applications:

ELISA, WB, IHC, IF

Recommended dilutions:

ELISA:1:2000-1:10000, WB:1:500-1:5000,
IHC:1:20-1:200, IF:1:50-1:200

Protein Background:

F-actin-capping proteins bind in a Ca(2+)-independent manner to the fast growing ends of actin filaments (barbed end) thereby blocking the exchange of subunits at these ends. Unlike other capping proteins (such as gelsolin and severin), these proteins do not sever actin filaments.

Gene ID:

CAPZA1

Uniprot

P52907

Synonyms:

F-actin-capping protein subunit alpha-1 (CapZ alpha-1), CAPZA1

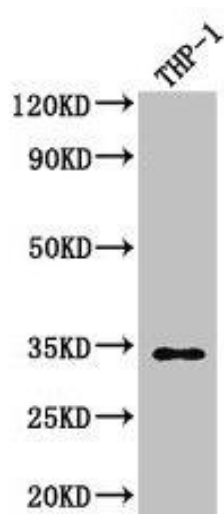
Immunogen:

Recombinant Human F-actin-capping protein subunit alpha-1 protein (211-252AA).

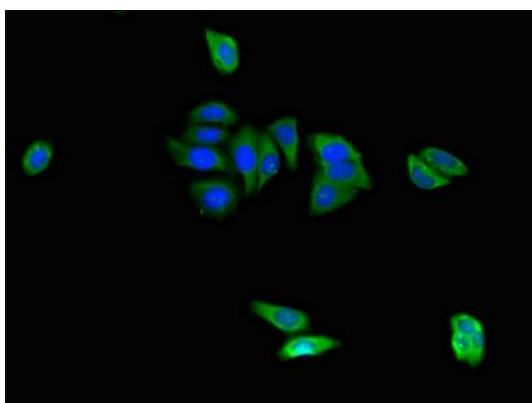
Storage:

Preservative: 0.03% Proclin 300. Constituents: 50% Glycerol, 0.01M PBS, PH 7.4

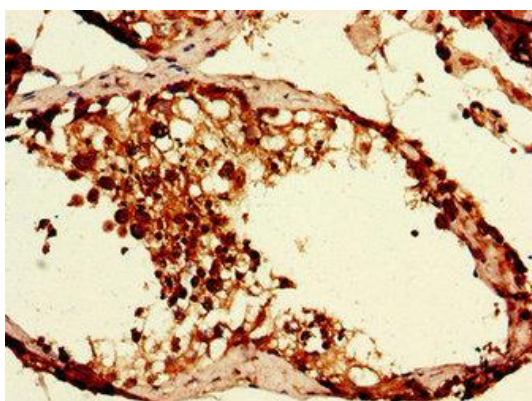
Product Images



Western Blot. Positive WB detected in: THP-1 whole cell lysate. All lanes: CAPZA1 antibody at 3 μ g/ml. Secondary. Goat polyclonal to rabbit IgG at 1/50000 dilution. Predicted band size: 33 kDa. Observed band size: 33 kDa.



Immunofluorescent analysis of HepG2 cells using PACO48258 at dilution of 1:100 and Alexa Fluor 488-conjugated AffiniPure Goat Anti-Rabbit IgG(H+L).



Immunohistochemistry of paraffin-embedded human testis tissue using PACO48258 at dilution of 1:100.