

PACO48246

---

## Product Information

**Size:**

50ug

**Reactivity:**

Human

**Source:**

Rabbit

**Isotype:**

IgG

**Applications:**

ELISA, IHC

**Recommended dilutions:**

ELISA:1:2000-1:10000, IHC:1:20-1:200

**Protein Background:**

Chromatin-binding factor that repress Notch signaling in the absence of Notch intracellular domain by acting as a CBF1 corepressor. Binds to the HEY promoter and might assist, along with NCOR2, RBPJ-mediated repression. Can suppress ATXN1 cytotoxicity in spinocerebellar ataxia type 1 (SCA1).

**Gene ID:**

ATXN1L

**Uniprot**

P0C7T5

**Synonyms:**

Ataxin-1-like (Brother of ataxin-1) (Brother of ATXN1), ATXN1L, BOAT BOAT1

**Immunogen:**

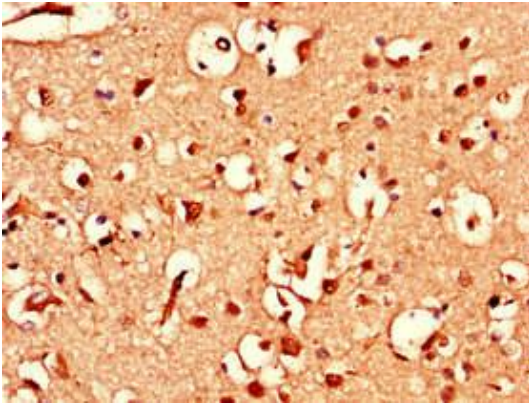
Recombinant Human Ataxin-1-like protein (183-463AA).

**Storage:**

Preservative: 0.03% Proclin 300. Constituents: 50% Glycerol, 0.01M PBS, PH 7.4

## Product Images

---



Immunohistochemistry of paraffin-embedded human brain tissue using PACO48246 at dilution of 1:100.