

PACO48198

---

## Product Information

**Size:**

50ug

**Reactivity:**

Human

**Source:**

Rabbit

**Isotype:**

IgG

**Applications:**

ELISA, IHC, IF, IP

**Recommended dilutions:**

ELISA:1:2000-1:10000, IHC:1:20-1:200,  
IF:1:50-1:200, IP:1:200-1:2000

**Protein Background:**

Has phospholipase and triglyceride lipase activities. Hydrolyzes high density lipoproteins (HDL) more efficiently than other lipoproteins. Binds heparin.

**Gene ID:**

LIPG

**Uniprot**

Q9Y5X9

**Synonyms:**

Endothelial lipase (EC 3.1.1.3) (Endothelial cell-derived lipase) (EDL) (EL), LIPG

**Immunogen:**

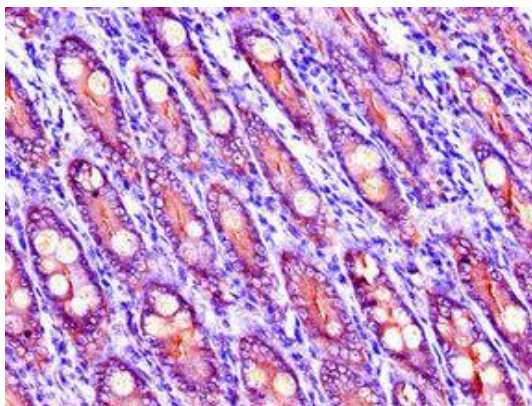
Recombinant Human Endothelial lipase protein (360-500AA).

**Storage:**

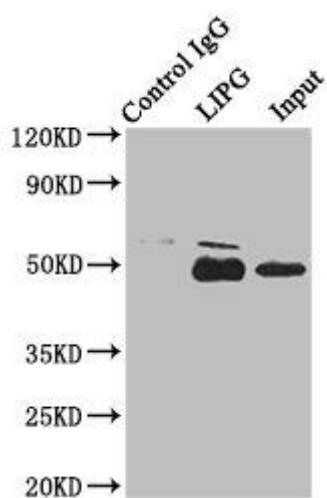
Preservative: 0.03% Proclin 300. Constituents: 50% Glycerol, 0.01M PBS, PH 7.4

## Product Images

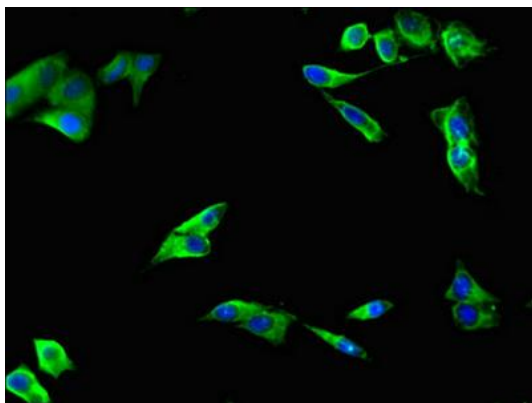
---



Immunohistochemistry of paraffin-embedded human small intestine tissue using PACO48198 at dilution of 1:100.



Immunoprecipitating LIPG in HepG2 whole cell lysate. Lane 1: Rabbit control IgG instead of PACO48198 in HepG2 whole cell lysate. For western blotting, a HRP-conjugated Protein G antibody was used as the secondary antibody (1/2000). Lane 2: PACO48198 (8 $\mu$ g) + HepG2 whole cell lysate (500 $\mu$ g). Lane 3: HepG2 whole cell lysate (10 $\mu$ g).



Immunofluorescent analysis of HeLa cells using PACO48198 at dilution of 1:100 and Alexa Fluor 488-conjugated AffiniPure Goat Anti-Rabbit IgG(H+L).