

NOTCH3 Antibody



PACO48178

Product Information

Size:

50ug

Reactivity:

Human

Source:

Rabbit

Isotype:

IgG

Applications:

ELISA, IHC

Recommended dilutions:

ELISA:1:2000-1:10000, IHC:1:20-1:200

Protein Background:

Functions as a receptor for membrane-bound ligands Jagged1, Jagged2 and Delta1 to regulate cell-fate determination. Upon ligand activation through the released notch intracellular domain (NICD) it forms a transcriptional activator complex with RBPJ/RBPSUH and activates genes of the enhancer of split locus. Affects the implementation of differentiation, proliferation and apoptotic programs.

Gene ID:

NOTCH3

Uniprot

Q9UM47

Synonyms:

Neurogenic locus notch homolog protein 3 (Notch 3) [Cleaved into: Notch 3 extracellular truncation; Notch 3 intracellular domain], NOTCH3

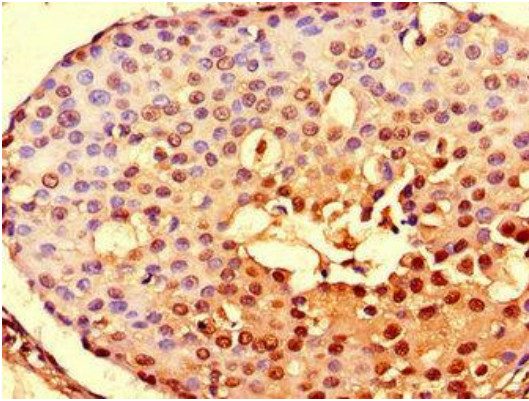
Immunogen:

Recombinant Human Neurogenic locus notch homolog protein 3 protein (1301-1496AA).

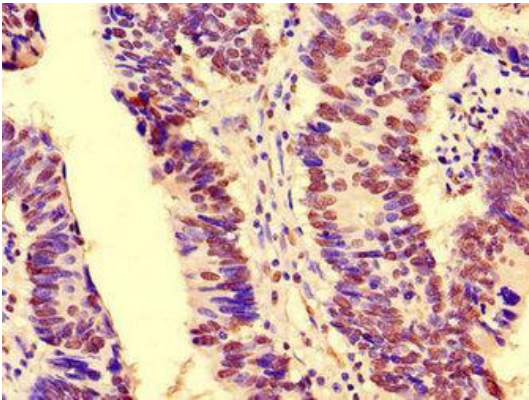
Storage:

Preservative: 0.03% Proclin 300. Constituents: 50% Glycerol, 0.01M PBS, PH 7.4

Product Images



Immunohistochemistry of paraffin-embedded human breast cancer using PACO48178 at dilution of 1:100.



Immunohistochemistry of paraffin-embedded human colon cancer using PACO48178 at dilution of 1:100.