

LZTFL1 Antibody



PACO48158

Product Information

Size:

50ug

Reactivity:

Human

Source:

Rabbit

Isotype:

IgG

Applications:

ELISA, WB, IHC, IF, IP

Recommended dilutions:

ELISA:1:2000-1:10000, WB:1:500-1:5000,
IHC:1:20-1:200, IF:1:50-1:200, IP:1:200-
1:2000,

Protein Background:

Regulates ciliary localization of the BBSome complex. Together with the BBSome complex, controls SMO ciliary trafficking and contributes to the sonic hedgehog (SHH) pathway regulation. May play a role in neurite outgrowth. May have tumor suppressor function.

Gene ID:

LZTFL1

Uniprot

Q9NQ48

Synonyms:

Leucine zipper transcription factor-like protein 1, LZTFL1

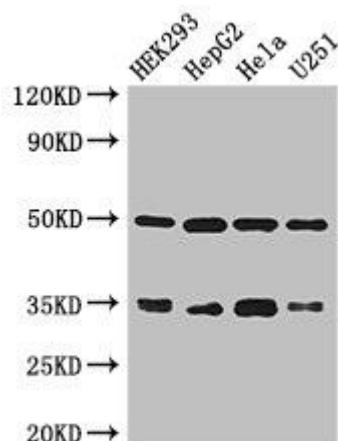
Immunogen:

Recombinant Human Leucine zipper transcription factor-like protein 1 protein (116-299AA).

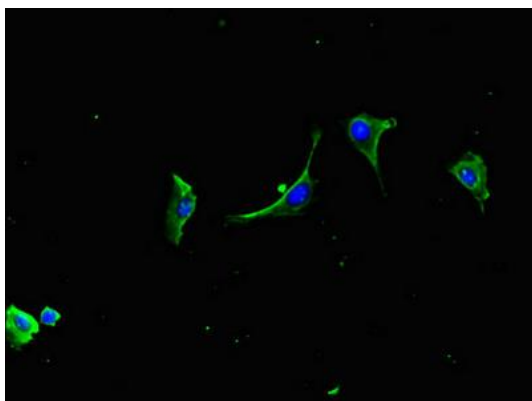
Storage:

Preservative: 0.03% Proclin 300. Constituents: 50% Glycerol, 0.01M PBS, PH 7.4

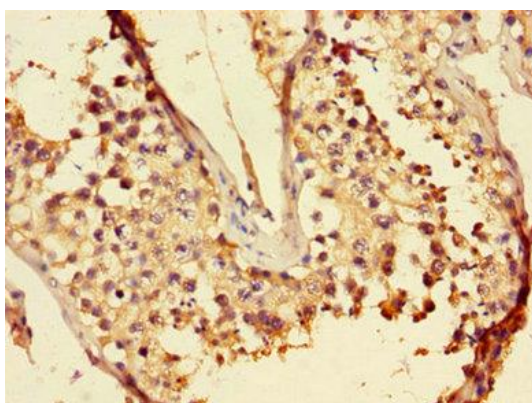
Product Images



Western Blot. Positive WB detected in: HEK293 whole cell lysate, HepG2 whole cell lysate, HeLa whole cell lysate, U251 whole cell lysate. All lanes: LZTFL1 antibody at 3 μ g/ml. Secondary: Goat polyclonal to rabbit IgG at 1/50000 dilution. Predicted band size: 35, 33, 30 kDa. Observed band size: 35, 50 kDa.



Immunofluorescent analysis of U251 cells using PACO48158 at dilution of 1:100 and Alexa Fluor 488-conjugated AffiniPure Goat Anti-Rabbit IgG(H+L).



Immunohistochemistry of paraffin-embedded human testis tissue using PACO48158 at dilution of 1:100.