

ZC4H2 Antibody



PACO48122

Product Information

Size:

50ug

Reactivity:

Human, Mouse

Source:

Rabbit

Isotype:

IgG

Applications:

ELISA, WB, IF

Recommended dilutions:

ELISA:1:2000-1:10000, WB:1:1000-1:5000,
IF:1:50-1:200

Protein Background:

May play a role in neuronal development and in neuromuscular junction formation.

Gene ID:

ZC4H2

Uniprot

Q9NQZ6

Synonyms:

Zinc finger C4H2 domain-containing protein (Hepatocellular carcinoma-associated antigen 127), ZC4H2, HCA127 KIAA1166

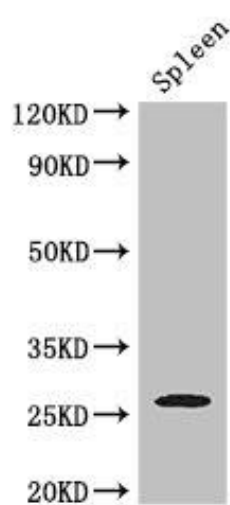
Immunogen:

Recombinant Human Zinc finger C4H2 domain-containing protein (1-224AA).

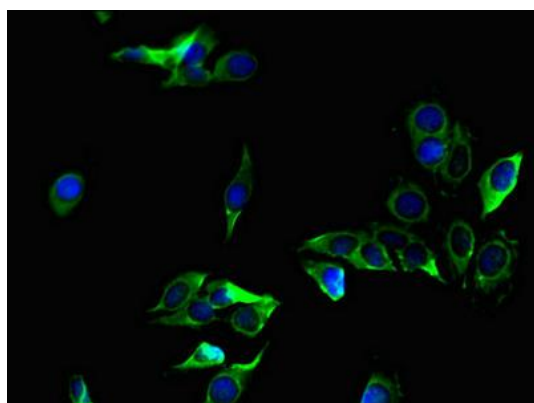
Storage:

Preservative: 0.03% Proclin 300. Constituents: 50% Glycerol, 0.01M PBS, PH 7.4

Product Images



Western Blot. Positive WB detected in: Mouse spleen tissue. All lanes: ZC4H2 antibody at 3 μ g/ml. Secondary. Goat polyclonal to rabbit IgG at 1/50000 dilution. Predicted band size: 27, 16, 24, 21, 26 kDa. Observed band size: 27 kDa.



Immunofluorescent analysis of HeLa cells using PACO48122 at dilution of 1:100 and Alexa Fluor 488-conjugated AffiniPure Goat Anti-Rabbit IgG(H+L).