

SLC52A3 Antibody



PACO48118

Product Information

Size:

50ug

Reactivity:

Human, Mouse

Source:

Rabbit

Isotype:

IgG

Applications:

ELISA, WB, IHC, IF

Recommended dilutions:

ELISA:1:2000-1:10000, WB:1:1000-1:5000,
IHC:1:20-1:200, IF:1:50-1:200

Protein Background:

Transporter for riboflavin, which must be obtained as a nutrient via intestinal absorption. Riboflavin transport is Na(+)-independent at low pH but significantly reduced by Na(+) depletion under neutral pH conditions. Activity is strongly inhibited by riboflavin analogs, such as lumiflavin, flavin mononucleotide (FMN), flavin adenine dinucleotide (FAD), by methylene blue, and to a lesser extent by amiloride.

Gene ID:

SLC52A3

Uniprot

Q9NQ40

Synonyms:

Solute carrier family 52, riboflavin transporter, member 3 (Riboflavin transporter 2) (hRFT2), SLC52A3, C20orf54 RFT2 RFVT3

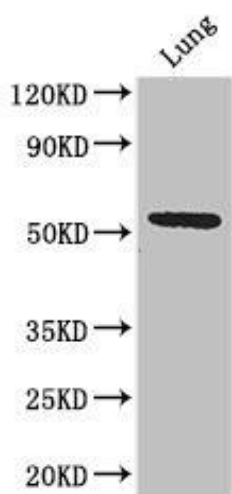
Immunogen:

Recombinant Human Solute carrier family 52, riboflavin transporter, member 3 protein (159-220AA).

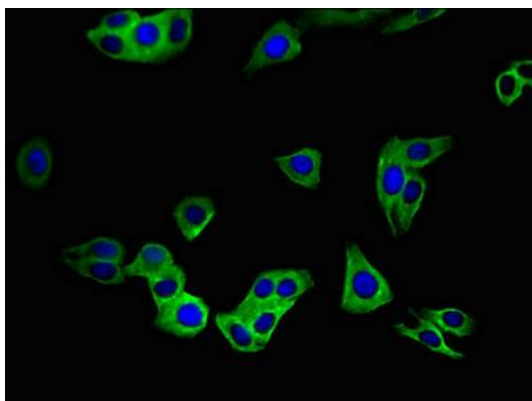
Storage:

Preservative: 0.03% Proclin 300. Constituents: 50% Glycerol, 0.01M PBS, PH 7.4

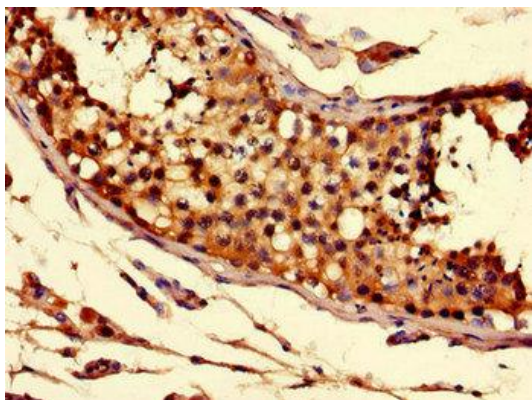
Product Images



Western Blot. Positive WB detected in: Mouse lung tissue. All lanes: Q9NQ4 antibody at 3.2µg/ml. Secondary. Goat polyclonal to rabbit IgG at 1/50000 dilution. Predicted band size: 51, 46 kDa. Observed band size: 51 kDa.



Immunofluorescent analysis of HepG2 cells using PACO48118 at dilution of 1:100 and Alexa Fluor 488-conjugated AffiniPure Goat Anti-Rabbit IgG(H+L).



Immunohistochemistry of paraffin-embedded human testis tissue using PACO48118 at dilution of 1:100.