

IQCG Antibody



PACO48110

Product Information

Size:

50ug

Reactivity:

Human, Mouse

Source:

Rabbit

Isotype:

IgG

Applications:

ELISA, WB, IF

Recommended dilutions:

ELISA:1:2000-1:10000, WB:1:1000-1:5000,
IF:1:50-1:200

Protein Background:

extracellular exosome.

Gene ID:

IQCG

Uniprot

Q9H095

Synonyms:

IQ domain-containing protein G, IQCG

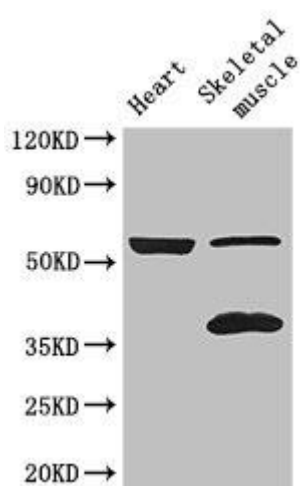
Immunogen:

Recombinant Human IQ domain-containing protein G protein (1-134AA).

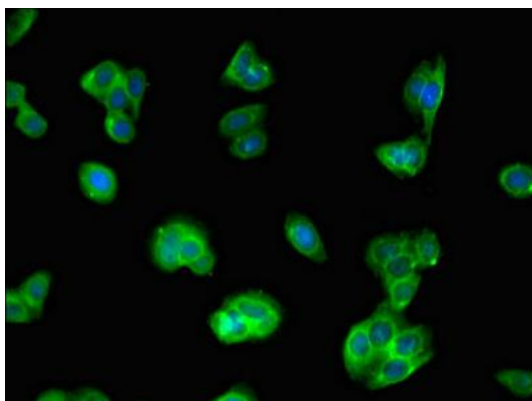
Storage:

Preservative: 0.03% Proclin 300. Constituents: 50% Glycerol, 0.01M PBS, PH 7.4

Product Images



Western Blot. Positive WB detected in: Mouse heart tissue, Mouse skeletal muscle tissue. All lanes: IQCG antibody at 3.4 μ g/ml. Secondary. Goat polyclonal to rabbit IgG at 1/50000 dilution. Predicted band size: 52, 41 kDa. Observed band size: 52, 4 kDa.



Immunofluorescent analysis of HepG2 cells using PACO48110 at dilution of 1:100 and Alexa Fluor 488-conjugated AffiniPure Goat Anti-Rabbit IgG(H+L).