

PACO48018

Product Information

Size:

50ug

Reactivity:

Human

Source:

Rabbit

Isotype:

IgG

Applications:

ELISA, WB, IHC, IF

Recommended dilutions:

ELISA:1:2000-1:10000, WB:1:2000-1:10000,
IHC:1:20-1:200, IF:1:50-1:200

Protein Background:

Plays a role in the organization of both preexisting and nascent microtubules in interphase cells. During mitosis, required for the organization and orientation of the mitotic spindle.

Gene ID:

CEP70

Uniprot

Q8NHQ1

Synonyms:

Centrosomal protein of 70 kDa (Cep70) (p10-binding protein), CEP70, BITE

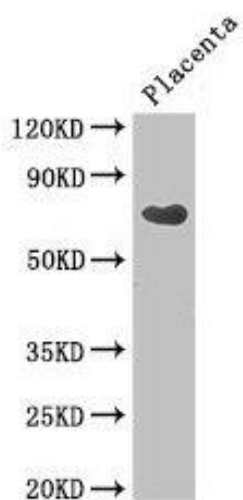
Immunogen:

Recombinant Human Centrosomal protein of 70 kDa protein (99-276AA).

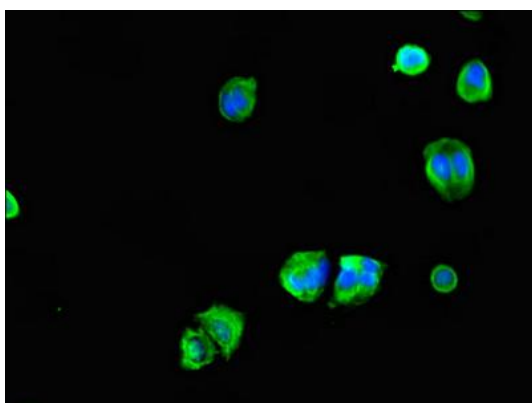
Storage:

Preservative: 0.03% Proclin 300. Constituents: 50% Glycerol, 0.01M PBS, PH 7.4

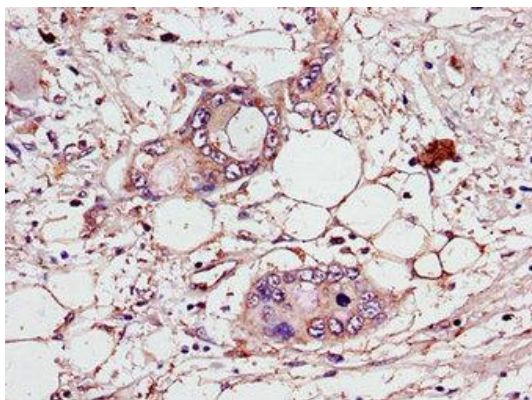
Product Images



Western Blot. Positive WB detected in: Human placenta tissue. All lanes: CEP70 antibody at 3.4 μ g/ml. Secondary. Goat polyclonal to rabbit IgG at 1/50000 dilution. Predicted band size: 70, 65, 26, 68 kDa. Observed band size: 70 kDa.



Immunofluorescent analysis of MCF-7 cells using PACO48018 at dilution of 1:100 and Alexa Fluor 488-conjugated AffiniPure Goat Anti-Rabbit IgG(H+L).



Immunohistochemistry of paraffin-embedded human pancreatic cancer using PACO48018 at dilution of 1:100.